



On-line PICASSO PROJECT

**Comprehensive Catalogue Raisonné
Prof. Dr. Enrique Mallen**

1922



Croquis sur une publicité annonçant trois concerts de Marcelle Meyer à la Salle de la Ville L'Évêque. Paris. January~February/1922. Pencil on add. S/U. Musée Picasso, Paris.

OPP.22:199

Verre, bouteille et paquet de tabac. Paris. Early/1922. Oil on canvas. 33,5 x 41 cm. Kunstmuseum Basel. (Inv H.1943.2). Öffentliche Kunstsammlung. On permanent loan from Emanuel Hoffmann Foundation.

OPP.22:007; FM:962bis; P.III:1173; PP.22:014; Z.IV:429; AH.13*:33; CG.87:182; CG.93:171; EM.55:115p; FE.57:11





Bouteille et compotier. Paris. [Early]/1922. Oil on canvas. 65 x 54 cm. Sotheby's. #165, N09498, 05/10/16. Formerly Christie's. #24, 6415, 02/06/01; Helly Nahmad Gallery, London.

OPP.22:020; PP.22:022; Z.XXX:277; BS.55:79p;
LO.98b*:n/a; NY.88e*:n/a; RT.99*:20

Groupe de personnages. Paris. Early/1922. Pencil on paper. 11,5 x 9 cm. The Picasso Estate.

OPP.22:053; P.III:1172





Groupe de personnages. Paris. Early/1922. Lead pencil on paper. 30 x 24,5 cm. The Picasso Estate.

OPP.22:054; P.III:1174; PP.22:009; Z.XXX:274;
JC.98*:202



Groupe de personnages. Paris. Early/1922. Lead pencil on paper. 32 x 24,5 cm. The Picasso Estate.

OPP.22:055; P.III:1175; PP.22:008; Z.XXX:273



Portraits de petites filles (Six sujets). Paris. Early/1922.
Lead pencil on paper. [34 x 24] [32 x 24,5] 31,5 x 24,6 cm.
Sotheby's. #595, L16005, 02/05/16. Formerly Marina Picasso
Collection.

OPP.22:056; P.III:1176; PP.22:027; Z.XXX:345; JR.93*:54;
NY.88d*:64; TK.00*:57; WS.95a*:70

Portrait de petite fille. Paris. Early/1922. Pencil on
paper [Obverse of *Portraits de petite fille (Quatre
sujets)*]. [34 x 24,5] 31,5 x 24,5 cm. Sotheby's. #125,
L20005, 02/19/20. Formerly Marina Picasso Collection.

OPP.22:057; P.III:1177; PP.22:029; Z.XXX:347;
WS.95a*:69





Main (Étude). Paris. [Early]/1922. Charcoal. 23,2 x 29,5 cm. Musée Picasso, Paris. Dation 1979. Sketchbook 19.

OPP.22:158; MPP:1868.01r; PP.21:324;
BL.96:24.1r; UW.88:119p

Main (Étude). Paris. [Early]/1922. Charcoal. 23,2 x 29,5 cm. Musée Picasso, Paris. Dation 1979. Sketchbook 19.

OPP.22:159; MPP:1868.02r; PP.21:325;
BL.96:24.2r; UW.88:119p





Main (Étude). Paris. [Early]/1922. Charcoal. 23,2 x 29,5 cm. Musée Picasso, Paris. Dation 1979. Sketchbook 19.

OPP.22:160; MPP:1868.03r; PP.21:326;
BL.96:24.3r; UW.88:119p

Nu de dos. Paris. [Early]/1922. Charcoal. 29,5 x 23,2 cm. Musée Picasso, Paris. Dation 1979. Sketchbook 19.

OPP.22:161; MPP:1868.04r; PP.21:327; BL.96:24.4r;
UW.88:119p





Femmes à la fontaine. Paris. [Early]/1922. Charcoal. 29,5 x 23,2 cm. Musée Picasso, Paris. Dation 1979. Sketchbook 19.

OPP.22:162; MPP:1868.05r; PP.21:328; BL.96:24.5r;
JC.98*:203; UW.88:118p

Pied (Étude). Paris. [Early]/1922. Charcoal. 29,5 x 23,2 cm. Musée Picasso, Paris. Dation 1979. Sketchbook 19.

OPP.22:163; MPP:1868.06r; PP.21:329; BL.96:24.6r;
UW.88:120p





Nu assis. Paris. [Early]/1922. Charcoal. 29,5 x 23,2 cm. Musée Picasso, Paris. Dation 1979. Sketchbook 19.

OPP.22:164; MPP:1868.07r; PP.21:330; BL.96:24.7r; UW.88:120p

Tête de femme. Paris. [Early]/1922. Charcoal. 29,5 x 23,2 cm. Musée Picasso, Paris. Dation 1979. Sketchbook 19.

OPP.22:165; MPP:1868.08r; PP.21:331; BL.96:24.8r; UW.88:121p





Buste de femme accoudée. Paris. [Early]/1922. Charcoal. 29,5 x 23,2 cm. Musée Picasso, Paris. Dation 1979. Sketchbook 19.

OPP.22:166; MPP:1868.09r; PP.21:332; BL.96:24.9r; JC.01a*:84a; PP.20*:152; UW.88:122p

Deux femmes nues à la fontaine. Paris. [Early]/1922. Charcoal. 29,5 x 23,2 cm. Musée Picasso, Paris. Dation 1979. Sketchbook 19.

OPP.22:167; MPP:1868.10r; PP.21:333; BL.96:24.10r; JC.98*:203; UW.88:122p





Nu de dos. Paris. [Early]/1922. Charcoal. 29,5 x 23,2 cm. Musée Picasso, Paris. Dation 1979. Sketchbook 19.

OPP.22:168; MPP:1868.11r; PP.21:334; BL.96:24.11r; JC.01a*:84b; UW.88:123p

Tête de femme. Paris. [Early]/1922. Charcoal. 29,5 x 23,2 cm. Musée Picasso, Paris. Dation 1979. Sketchbook 19.

OPP.22:169; MPP:1868.12r; PP.21:335; BL.96:24.12r; PP.20*:153; UW.88:123p





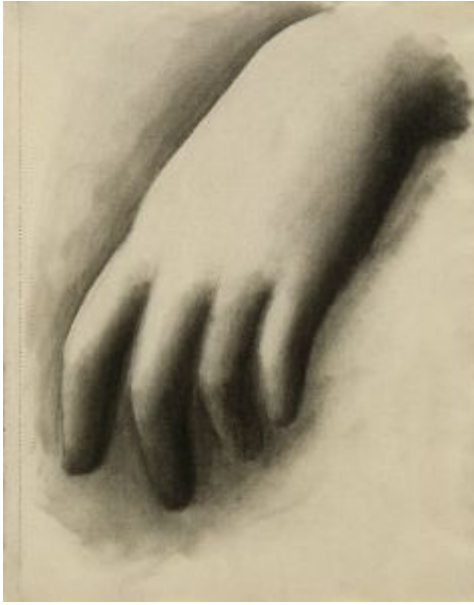
Femmes à la fontaine. Paris. [Early]/1922. Charcoal. 29,5 x 23,2 cm. Musée Picasso, Paris. Dation 1979. Sketchbook 19.

OPP.22:170; MPP:1868.13r; PP.21:336; BL.96:24.13r;
JC.98*:203; UW.88:124p

Main (Étude). Paris. [Early]/1922. Charcoal. 29,5 x 23,2 cm. Musée Picasso, Paris. Dation 1979. Sketchbook 19.

OPP.22:171; MPP:1868.14r; PP.21:337;
BL.96:24.14r; UW.88:124p





Main (Étude). Paris. [Early]/1922. Charcoal. 29,5 x 23,2 cm. Musée Picasso, Paris. Dation 1979. Sketchbook 19.

OPP.22:172; MPP:1868.15r; PP.21:338; BL.96:24.15r;
UW.88:125p

Enfant nu, assis. Paris. [Early]/1922. Charcoal & sanguine. 29,5 x 23,2 cm. Musée Picasso, Paris. Dation 1979. Sketchbook 19.

OPP.22:173; MPP:1868.16r; PP.21:339;
BL.96:24.16r; UW.88:125p





Mère et enfant. Paris. [Early]/1922. Charcoal. 29,5 x 23,2 cm. Musée Picasso, Paris. Dation 1979. Sketchbook 19.

OPP.22:174; MPP:1868.17r; PP.21:340; BL.96:24.17r;
UW.88:126p

Mère et enfant. Paris. [Early]/1922. Charcoal. 29,5 x 23,2 cm. Musée Picasso, Paris. Dation 1979. Sketchbook 19.

OPP.22:175; MPP:1868.18r; PP.21:341;
BL.96:24.18r; UW.88:126p





Mère et enfant. Paris. [Early]/1922. Charcoal. 29,5 x 23,2 cm. Musée Picasso, Paris. Dation 1979. Sketchbook 19.

OPP.22:176; MPP:1868.19r; PP.21:342; BL.96:24.19r; UW.88:127p

Étude d'après la figure de Perséphone de la frise est du Parthénon. Paris. [Early]/1922. Charcoal. 29,5 x 23,2 cm. Musée Picasso, Paris. Dation 1979. Sketchbook 19.

OPP.22:177; MPP:1868.20r; PP.21:343; BL.96:24.20r; UW.88:127p





Étude d'après les figures de Diane et Aphrodite de la frise est du Parthénon. Paris. [Early]/1922. Charcoal. 29,5 x 23,2 cm. Musée Picasso, Paris. Dation 1979. Sketchbook 19.

OPP.22:178; MPP:1868.21r; PP.21:344; BL.96:24.21r; GD.11:5p; JC.98*:203; UW.88:128p

Femme au voile debout et deux hommes assis. Paris. [Early]/1922. Sanguine. 29,5 x 23,2 cm. Musée Picasso, Paris. Dation 1979. Sketchbook 19.

OPP.22:179; MPP:1868.22r; PP.21:345; BL.96:24.22r; UW.88:129p





Femme au voile. Paris. [Early]/1922. Sanguine. 29,5 x 23,2 cm. Musée Picasso, Paris. Dation 1979. Sketchbook 19.

OPP.22:180; MPP:1868.23r; PP.21:346; BL.96:24.23r; UW.88:129p

Jeune homme assis avec un arc. Paris. [Early]/1922. Sanguine. 29,5 x 23,2 cm. Musée Picasso, Paris. Dation 1979. Sketchbook 19.

OPP.22:181; MPP:1868.24r; PP.21:347; BL.96:24.24r; UW.88:130p





Esquisse d'homme assis. Paris. [Early]/1922. Sanguine. 29,5 x 23,2 cm. Musée Picasso, Paris. Dation 1979. Sketchbook 19.

OPP.22:182; MPP:1868.25r; PP.21:348; BL.96:24.25r; UW.88:130p

Nu debot: étude. Paris. [Early]/1922. Sanguine. 29,5 x 23,2 cm. Musée Picasso, Paris. Dation 1979. Sketchbook 19.

OPP.22:183; MPP:1868.28r; PP.21:349; BL.96:24.28r; UW.88:131p





Femme au voile debout et deux hommes assis. Paris. [Early]/1922. Sanguine. 29,5 x 23,2 cm. Musée Picasso, Paris. Dation 1979. Sketchbook 19.

OPP.22:184; MPP:1868.29r; PP.21:350; BL.96:24.29r; UW.88:131p

Saltimbanque assis. Paris. [Early]/1922. Charcoal & sanguine on Ingres paper. 29,5 x 23,2 cm. Musée Picasso, Paris. Dation 1979. Sketchbook 19.

OPP.22:185; MPP:1868.34r; PP.21:351; BL.96:24.34r; TL.95*:9.1; UW.88:132p





Un premier projet de La flûte de Pan (Étude). Paris. [Early]/1922. Charcoal on paper. 29,5 x 23,2 cm. Musée Picasso, Paris. Dation 1979. Sketchbook 19.

OPP.22:186; MPP:1868.36r; PP.21:352; BL.96:24.36r; TL.95*:9.2; UW.88:132p

Joueur de flûte de Pan: étude pour un premier projet de La flûte de Pan. Paris. [Early]/1922. Charcoal on paper. 29,5 x 23,2 cm. Musée Picasso, Paris. Dation 1979. Sketchbook 19.

OPP.22:187; MPP:1868.37r; PP.21:353; BL.96:24.37r; TL.95*:9.3; UW.88:133p





Couple et Amour: étude pour un premier projet de La flûte de Pan. Paris. [Early]/1922. Charcoal. 29,5 x 23,2 cm. Musée Picasso, Paris. Dation 1979. Sketchbook 19.

OPP.22:188; MPP:1868.38r; PP.21:354; BL.96:24.38r; UW.88:133p

Nu de dos: étude pour un premier projet de La flûte de Pan. Paris. [Early]/1922. Charcoal. 29,5 x 23,2 cm. Musée Picasso, Paris. Dation 1979. Sketchbook 19.

OPP.22:189; MPP:1868.39r; PP.21:355; BL.96:24.39r; UW.88:134p





Nu debout et nu assis à la draperie. Paris. [Early]/1922.
Charcoal. 29,5 x 23,2 cm. Musée Picasso, Paris. Dation 1979.
Sketchbook 19.

OPP.22:190; MPP:1868.40r; PP.21:356; BL.96:24.40r;
UW.88:134p

Couple et joueur de flûte de Pan: études pour un premier projet de La flûte de Pan. Paris.
[Early]/1922. Charcoal on paper. 29,5 x 23,2 cm.
Musée Picasso, Paris. Dation 1979. Sketchbook 19.

OPP.22:191; MPP:1868.41r; PP.21:357;
BL.96:24.41r; TL.95*:9.4; UW.88:135p





Joueur de flûte de Pan: étude pour un premier projet de La flûte de Pan. Paris. [Early]/1922. Charcoal on paper. 29,5 x 23,2 cm. Musée Picasso, Paris. Dation 1979. Sketchbook 19.

OPP.22:192; MPP:1868.42r; PP.21:358; BL.96:24.42r;
TL.95*:9.5; UW.88:135p

Un premier projet de La flûte de Pan (Étude).
Paris. [Early]/1922. Charcoal on paper. 29,5 x 23,2 cm.
Musée Picasso, Paris. Dation 1979. Sketchbook 19.

OPP.22:193; MPP:1868.44r; PP.21:359;
BL.96:24.44r; TL.95*:9.6; UW.88:136p





Couple enlacé: étude pour un premier projet de La flûte de Pan. Paris. [Early]/1922. Charcoal. 29,5 x 23,2 cm. Musée Picasso, Paris. Dation 1979. Sketchbook 19.

OPP.22:194; MPP:1868.45r; PP.21:360; BL.96:24.45r;
UW.88:136p

Tête de femme. Paris. [1921] Early/1922. Red & black chalk with red chalk wash on tan paper. 62,1 x 48,2 cm. The Arts Club of Chicago. Arts Club Purchase Fund, 1926.

OPP.22:256; PP.22:001; Z.XXX:380; AB.30*:71;
CH.23a*:50; CH.33c*:103; CH.68a*:83; SD.13a*:73





Tasse et paquet de tabac. Paris. [Early]/1922.
Oil on canvas. 19 x 24 cm. Tornabuoni Art, Paris.

OPP.22:277; PP.22:015; Z.IV:423

Portraits de petite fille (Quatre sujets). Paris.
Early/1922. Pencil on paper [Reverse of *Portrait de
petite fille*]. 31,5 x 24,5 cm. Sotheby's. #125, L20005,
02/19/20. Formerly Marina Picasso Collection.

OPP.22:289; PP.22:028; Z.XXX:346; WS.95a*:69





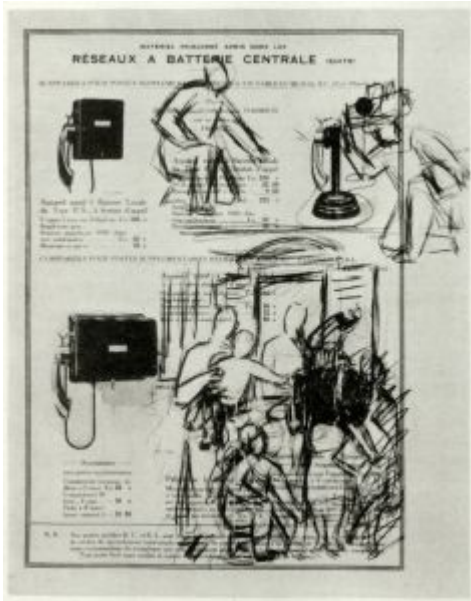
Deux personnages. Paris. [Early]/1922. Graphite on paper. 16 x 13,5 cm. Private collection.

OPP.22:290; PP.22:004; Z.XXX:269

Groupes de personnages. Paris. [Early]/1922. Graphite on printed paper. 21,5 x 21,5 cm. Private collection.

OPP.22:291; PP.22:005; Z.XXX:271





Groupes de personnages. Paris. [Early]/1922. Graphite on printed paper. 27,5 x 21,5 cm. Private collection.

OPP.22:292; PP.22:006; Z.XXX:272

Groupes de personnages. Paris. [Early]/1922. Gra. Graphite on paper 23,5 x 17,5 cm. Private collection.

OPP.22:293; PP.22:010; Z.XXX:275





Groupes de personnages. Paris. [Early]/1922. Graphite on paper. 28 x 24 cm. Private collection.

OPP.22:294; PP.22:007; Z.XXX:276

Tête de femme. Paris. [Early]/1922. Conté pencil on paper. 62 x 47 cm. Private collection.

OPP.22:298; PP.22:002; Z.XXX:288



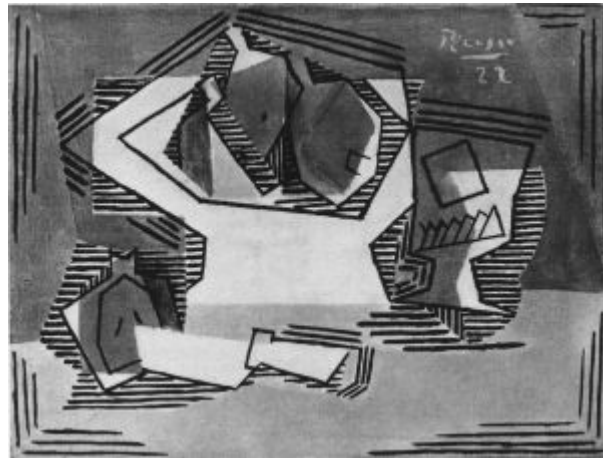


Paquet de tabac et verre. Paris. [Early] 1st-Quarter/1922. Oil on canvas. [32 x 40] 33,5 x 41,5 cm. Abanca Collection. Courtesy Galería Guillermo de Osma, Madrid.

OPP.22:009; FM:964; P.III:1168; PP.22:013; Z.IV:426; BS.65c*:31; FC.00*:43; GP.96:149p; MA.22a*:45; NY.23e*:n/a; RP.81:11.4; WW.91:284p

Verre et compotier. Paris. 1st-Quarter/1922. Oil on canvas [Oic]. 27 x 32 cm. Private collection, New York.

OPP.22:049; FM:963; P.III:1169; PP.22:017; Z.IV:425; JR.62*:3.27





Verre et paquet de cigarettes. Paris. 1st-Quarter/1922. Oil on canvas. 19 x 24 cm. Sotheby's. #378, N09416, 11/06/15.

OPP.22:051; P.III:1170; PP.22:016; Z.IV:428

Homme nu observant une femme endormie. Paris. [1922] 1st-Quarter/1923. Pencil & oil on panel. 19 x 24 cm. Museo Picasso, Málaga. On loan from Fundación Almine & Bernard Ruiz-Picasso para el Arte.

OPP.22:218; DW.05:45p; JC.01a*:83; MG.18*:67p





Mère et enfant. Paris. First-Quarter/1922
[Early/1923]. Red chalk on paper. 24 x 42,5 cm.
Museum Sammlung Rosengart, Luzern. Siegfried &
Angela Rosengart Collection.

OPP.22:136; P.III:1270; PP.23:022; JC.98*:181;
KB.01*:80; RD.00*:94; UW.88*:61; WS.95a*:79

Nature morte. Paris. 29-January/1922. Oil
on canvas. 73 x 92 cm. Musée National
d'Art Moderne, Centre Georges Pompidou,
Paris. (Inv AM.3166.P). Don de Raoul La
Roche, 1952.

OPP.22:003; CG.93:119; KZ.29*:n/a;
MA.22a*:46





Guitare, bouteille et verre. Paris. 4-February/1922. Oil on canvas [Obverse of *Nature morte*]. [81 x 100,7] 81,6 x 100,3 cm. The Art Institute of Chicago. (Inv 1953.28). Ada Turnbull Hertle Endowment. Formerly Gertrude Stein Collection.

OPP.22:048; P.III:1166; PP.22:011; Z.XXX:286; CH.68a*:26; FA.70*:57; JB.92:196p; MA.22a*:44; NH.51*:32; NY.49j*:8; PA.23a:171p; SD.13a*:75; SD.13b:57p

Bouteille, guitare et compotier. Paris. 10-February/1922. Oil on canvas. 116 x 73 cm. Helly Nahmad Collection, Monaco/London. Formerly Sotheby's. #227, NY7648, 05/10/01.

OPP.22:022; P.III:1167; PP.22:012; Z.IV:427; BS.86b*:51; BT.40*:n/a; BU.22*:106; CB.11*:81p; CG.05:100; CG.08*:118p; CH.40a*:53; HN.13*:89p; JC.40:117p; NY.38a*:8; RI.41*:176; TC.13:2.25; TO.14:30p





Verre et compotier. Paris. 13-February/1922. Oil on canvas. [22,2 x 34,8] [21,9 x 34,9] 22,2 x 34,3 cm. Sotheby's. #406, N09861, 05/15/18. Formerly Sotheby's. #40, L12002, 02/08/12.

OPP.22:021; PP.22:189; Z.IV:421

Mère et enfant. Paris. March/1922. Lead pencil on paper. 17 x 10,5 cm. The Picasso Estate.

OPP.22:052; P.III:1171; PP.22:025; Z.XXX:268





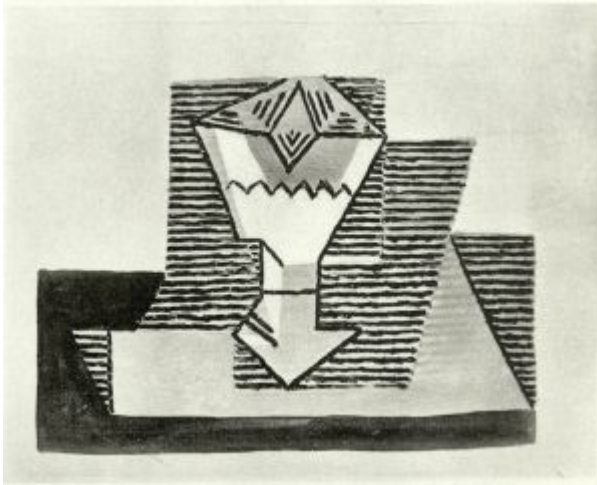
Femme à la cruche: quatre études. Paris. March/1922. Pencil on paper. 18,4 x 24,7 cm. Musée Picasso, Paris. Dation 1979.

OPP.22:200; MPP:975; PP.22:024; Z.IV:270

Femme nue à la cruche. Paris. March/1922. Lead pencil on paper. 18,6 x 12,2 cm. Musée Picasso, Paris. Dation 1979.

OPP.22:221; MPP:972; PP.22:023; Z.XXX:267





Verre sur une table. Paris. [Spring]/1922. Oil on canvas [OiC]. 22 x 27 cm. Private collection.

OPP.22:278; PP.22:037; Z.IV:424

Le verre taillé sur fond rose. Paris. [Spring]/1922. Oil on canvas. [18,5 x 23,5] 18,3 x 23,3 cm. Artcurial. #10, 4093, 06/29/21.

OPP.22:285; PP.22:034; Z.VI:1432; CO.88*:



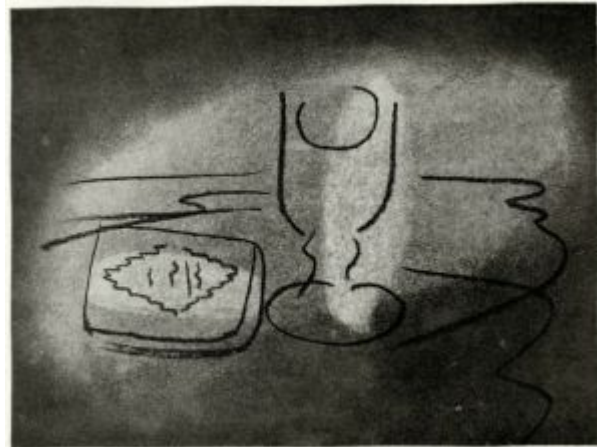


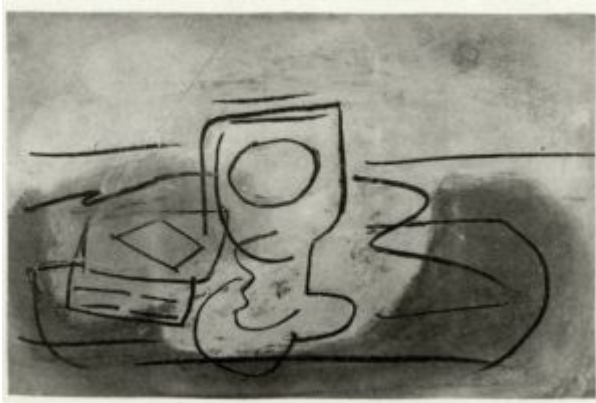
Verre et paquet de tabac. Paris. [Spring]/1922.
Pastel, gouache & charcoal [OïC]. 25 x 32 cm.
Private collection.

OPP.22:295; PP.22:033; Z.XXX:281

Verre et paquet de tabac. Paris.
[Spring]/1922. Pastel on paper [OïC]. 25 x
32 cm. Private collection.

OPP.22:296; PP.22:032; Z.XXX:283



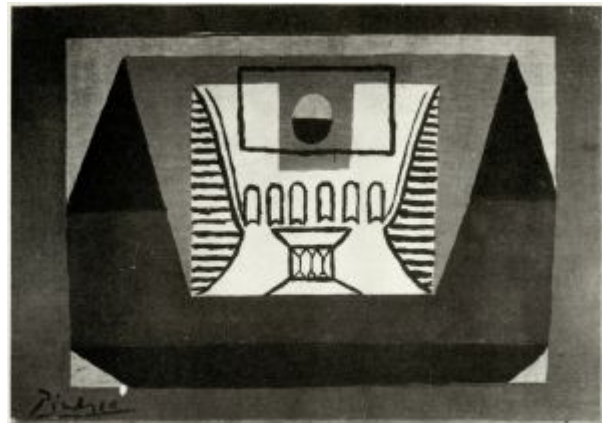


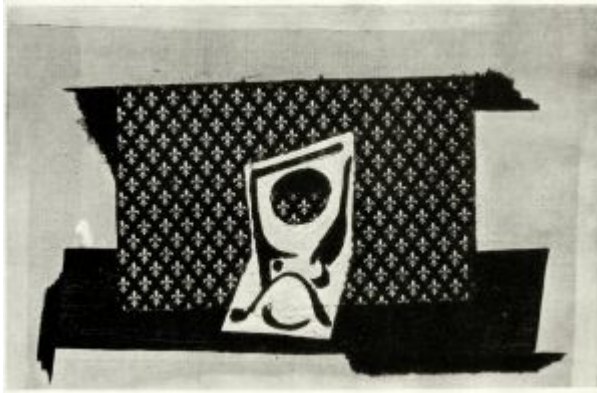
Verre et paquet de tabac. Paris. [Spring]/1922. Pastel & colored pencils [OïC]. 16 x 25 cm. Private collection.

OPP.22:297; PP.22:031; Z.XXX:284

Verre sur fond bleu. Paris. [Spring]/1922. Oil on canvas [OïC]. 19 x 27 cm. Private collection.

OPP.22:299; PP.22:035; Z.XXX:289





Verre. Paris. [Spring]/1922. Oil & pasted papers on canvas [OiC]. 22 x 33 cm. Private collection.

OPP.22:300; PP.22:036; Z.XXX:290

Portrait d'une petite fille. Paris. 24-March/1922. Pencil on paper. [62,2 x 41,8] 62,8 x 42,1 cm. Christie's. #1067, 12146, 11/17/16. Formerly Christie's. #32, 4038, 10/22-23/15; Sotheby's. #128, L08006, 02/06/08.

OPP.22:059; P.III:1179; PP.22:026; Z.IV:366



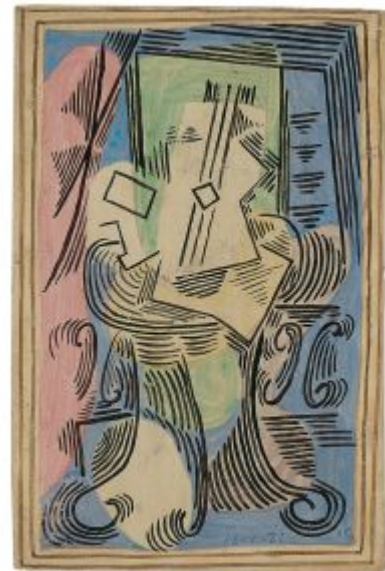


Portrait de Léon Bakst. Paris. 1-April/1922. Lead pencil on paper. 64 x 49 cm. Musée Picasso, Paris. Dation 1979.

OPP.22:058; MPP:974; P.III:1178; PP.22:030; Z.IV:363; BH.06*:69p; DC.87:304; EC.02:353; GC.96:27p; HS.98:57p; MN.80*:n/a; RV.05*:n/a

Nature morte à la guitare sur guéridon. Paris. 18-April/1922. Oil on wood. 15 x 10 cm. Museo Picasso, Málaga. Gift of Christine Ruiz-Picasso.

OPP.22:062; MPM:1.3.A; P.III:1182; CG.08*:104p; DP.20*:47; GS.03:1.10; NC.17*:61





Table, fenêtre et objet. Paris. 18-April/1922. Oil & pencil on wood. S/U. The Picasso Estate.

OPP.22:065; P.III:1185

Composition. Paris. 23-April/1922. Gouache on paper. 16,2 x 10,5 cm. Christie's. #151, 7858, 06/24/10. Formerly André Salmon Collection.

OPP.22:226





Portrait d'Élie Faure. Paris. 14-June/1922. Graphite on paper.
32 x 26 cm. Private collection.

OPP.22:061; P.III:1181; PP.22:038; Z.IV:361; EC.16*:94

Nu assis. Dinard. [Summer]/1922. Pencil. 14 x 11
cm. Private collection.

OPP.22:036; PP.22:135; Z.XXX:369; UW.88:47a





Nu vu de dos. Dinard. [Summer/1922. Pencil. [41 x 29] 42 x 29,2 cm. The Whitworth Art Gallery, University of Manchester. (Inv D.1931.12). Arthur Edward Anderson (Gift, 1931).

OPP.22:039; PP.22:102; Z.IV:378; UW.88:50a

Vue de Saint-Servan. Dinard. [Summer]/1922. India ink. 41 x 29 cm. Private collection.

OPP.22:267; PP.22:152; Z.IV:376



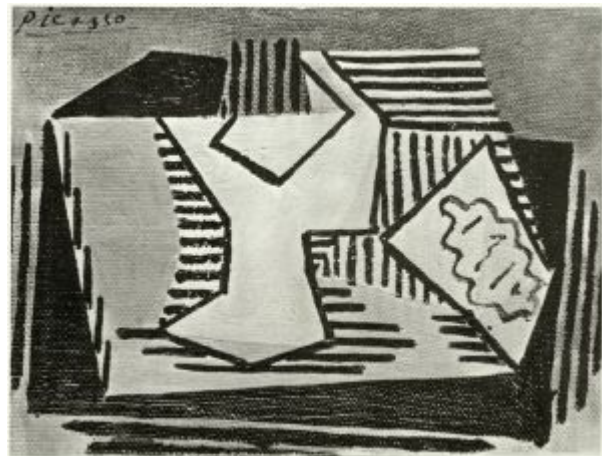


Buste de femme. Dinard. [Summer]/1922. Oil on canvas [OiC]. 9,5 x 10,5 cm. Private collection.

OPP.22:268; PP.22:138; Z.IV:386; LO.31*:n/a

Verre, paquet de tabac. Dinard. [Summer]/1922. Oil on canvas [OiC]. 16 x 22 cm. Private collection.

OPP.22:269; PP.22:187; Z.IV:400





Verre, bouteille, poisson. [Dinard].
[Summer]/1922. Oil on canvas [OïC]. 66 x 81 cm.
Private collection.

OPP.22:270; PP.22:173; Z.IV:401

Bouteille et verres. [Dinard]. [Summer]/1922.
Essence & graphite on paper. 15 x 11 cm. Private
collection.

OPP.22:271; PP.22:219; Z.IV:402





Bouteille, compotier, poissons. Dinard. [Summer]/1922. Watercolor & graphite on paper. [15 x 11] 13,9 x 10.9 cm. Virginia Museum of Fine Arts, Richmond. (Inv 47.10.80). T. Catesby Jones Collection.

OPP.22:272; PP.22:210; Z.IV:405

Compotier, bouteille, poisson. Dinard. [Summer]/1922. Essence & graphite on paper. 15 x 11 cm. Private collection.

OPP.22:273; PP.22:208; Z.IV:406



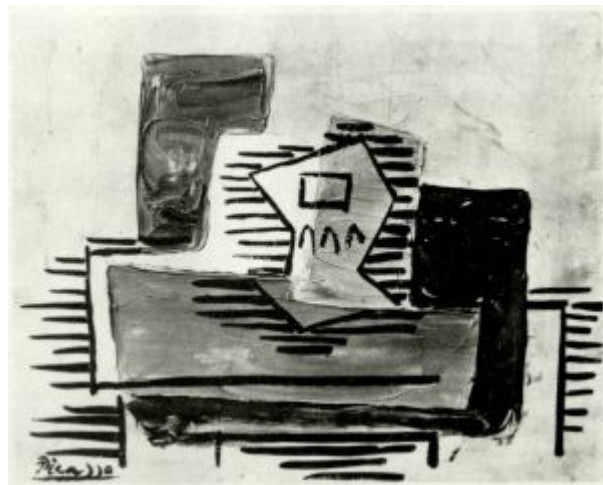


Poissons, verre, citron. Dinard.
[Summer]/1922. Oil on canvas [OIC]. 22 x 27 cm.
Private collection.

OPP.22:274; PP.22:229; Z.IV:411

Verres. Dinard. [Summer]/1922. Oil on
canvas [OIC]. 38 x 46 cm. Private
collection. Formerly Raymond Mortimer
Collection, London.

OPP.22:275; PP.22:180; Z.IV:417;
PA.29c*:n/a



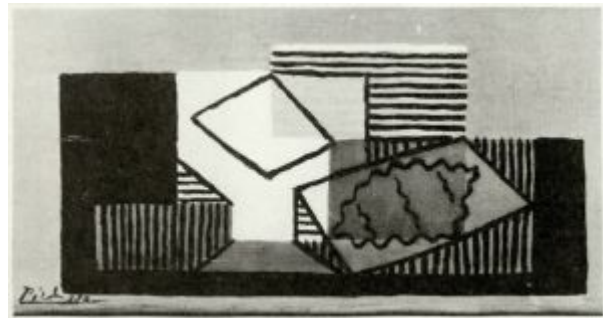


Tasse et cuillère. Dinard. [Summer]/1922. Oil on canvas [OïC]. 22 x 27 cm. Artizon Museum, Tokyo. Ishibashi Foundation.

OPP.22:276; PP.22:174; Z.IV:419

Verre et paquet de tabac. Dinard. [Summer]/1922. Oil on canvas [OïC]. 28 x 14,5 cm. Private collection.

OPP.22:284; PP.22:186; Z.VI:1427





Joie maternelle. Fontainebleau. [Summer/1921].
Etching. 9,9 x 14,9 cm. Musée Picasso, Paris.
Dation 1979.

OPP.22:393; Ba:66; MPP:2025

Mère et fils (Olga et Paulo). Dinard.
[Summer/1922]. Etching. 14 x 12,7 cm. Musée
Picasso, Paris. Dation 1979.

OPP.22:394; Ba:67; MPP:2026





Femme assise. Dinard. [Summer]/1922. Pencil on sketchbook paper. 15,5 x 11,5 cm. Private collection.

OPP.22:400; PP.22:107; GG.86*:76



Tête d'enfant. Dinard. [Summer]/1922. Pencil on sketchbook paper. 15,5 x 11,5 cm. Private collection.

OPP.22:401; PP.22:110; GG.86*:76.2p

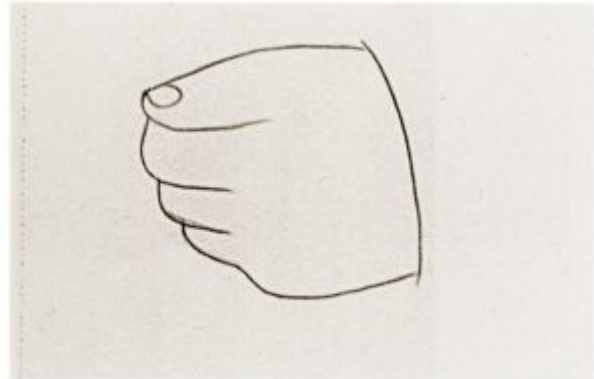


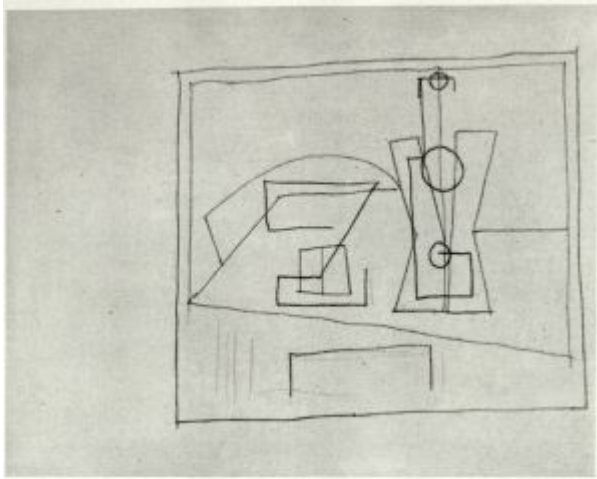
Main d'enfant. Dinard. [Summer]/1922. Pencil on sketchbook paper. 15,5 x 11,5 cm. Private collection.

OPP.22:402; PP.22:111; GG.86*:76.39p

Main d'enfant. Dinard. [Summer]/1922. Pencil on sketchbook paper. 11,5 x 15,5 cm. Private collection.

OPP.22:403; PP.22:112; GG.86*:76.40p





Bouteille et verre. Dinard. [Summer]/1922.
Pencil on sketchbook paper. 11,5 x 15 cm. Private collection.

OPP.22:405; PP.22:220; Z.XXX:398; GG.86*:74

Nature morte sur une table. Dinard.
[Summer]/1922. Pencil on sketchbook paper. 15 x
11,5 cm. Private collection.

OPP.22:406; PP.22:203; Z.XXX:392; GG.86*:74





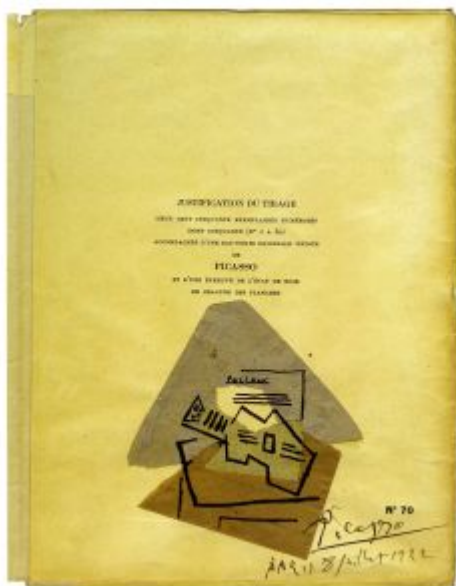
Portrait de Ruth Dangler. Paris. 26-June/1922. Graphite pencil on paper. 64,2 x 49,2 cm. National Gallery of Art, Washington, DC. (Inv 1985.64.106). Collection of Mr. & Mrs. Paul Mellon.

OPP.22:063; P.III:1183; PP.22:039; Z.IV:364; WA.01*:46; WA.86a*:n/a

Souvenir 1917 à Rome. Rome. 1-July/1922. Pen & ink on paper. 33,7 x 24,8 cm. Sotheby's. #167, N10148, 11/13/19.

OPP.22:288



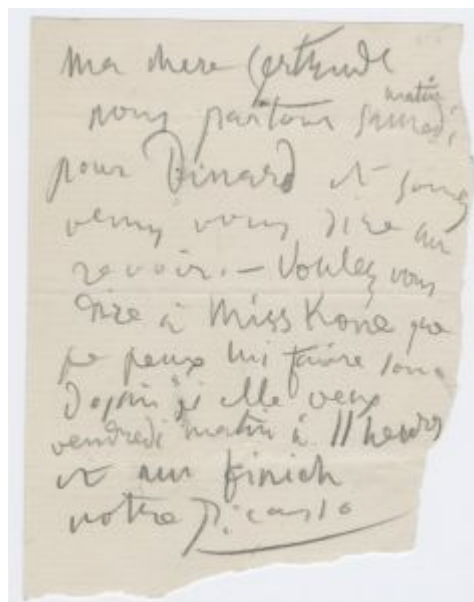


Guitare (Poulenc). Paris. 8-July/1922. Ink & pasted paper on paper. 27,5 x 20,5 cm. Private collection.

OPP.22:259; FP.13:119p

Lettre manuscrite à Gertrude Stein. Paris. [10~13-July/1922]. Ink on paper. S/U. Beinecke Rare Book and Manuscript Library. Yale University. Gertrude Stein & Alice B. Toklas Collection.

OPP.22:133





Portrait du docteur Claribel Cone. Paris. 14-July/1922.
Graphite on paper. [62,8 x 48,4] 64 x 49,3 cm. The Baltimore
Museum of Art. (Inv 50.12.499). The Cone Collection, formed
by Dr. Claribel Cone and Miss Etta Cone of Baltimore, Maryland.

OPP.22:064; P.III:1184; PP.22:052; Z.IV:362; AB.57*:n/a;
CP.67:322; JR.96:310p; NY.42a*:n/a

Nu assis. Dinard. [15-July~15-September/1922].
Graphite on paper. 14 x 11 cm. Private collection.

OPP.22:301; PP.22:097; Z.XXX:291





Main posée sur un livre. Dinard. [15-July~15-September/1922]. Graphite on paper. 14 x 11 cm. Private collection.

OPP.22:302; PP.22:074; Z.XXX:292

Fenêtre ouverte sur les arbres. Dinard. [15-July~15-September/1922]. Graphite on paper. 14 x 11 cm. Private collection.

OPP.22:303; PP.22:057; Z.XXX:293





Main posée sur un livre. Dinard. [15-July~15-September/1922]. Graphite on paper. 14 x 11 cm. Private collection.

OPP.22:304; PP.22:075; Z.XXX:294

Arbres. Dinard. [15-July~15-September/1922]. Graphite on paper. 14 x 11 cm. Private collection.

OPP.22:305; PP.22:056; Z.XXX:295





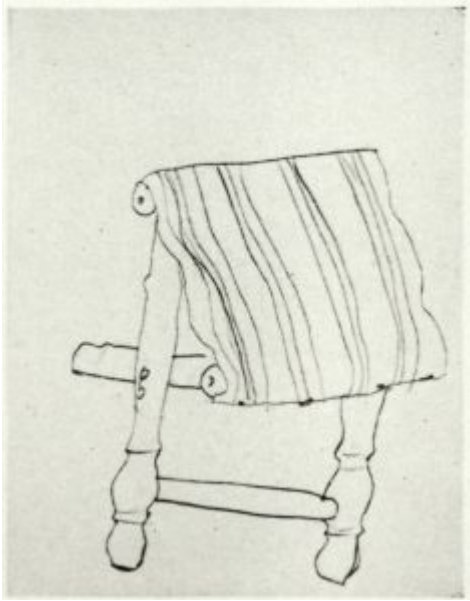
Main d'enfant. Dinard. [15-July~15-September/1922].
Graphite on paper. 14 x 11 cm. Private collection.

OPP.22:306; PP.22:073; Z.XXX:297

Fauteuil. Dinard. [15-July~15-September/1922].
Graphite on paper. 14 x 11 cm. Private collection.

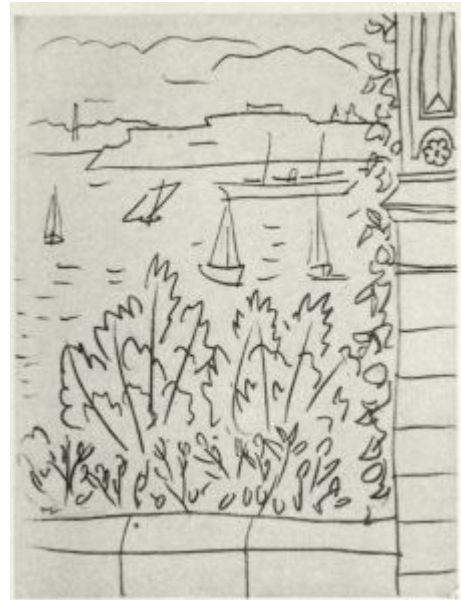
OPP.22:307; PP.22:087; Z.XXX:299





Siège pliant. Dinard. [15-July~15-September/1922].
Graphite on paper. 14 x 11 cm. Private collection.

OPP.22:308; PP.22:067; Z.XXX:308



Vue sur la mer. Dinard. [15-July~15-September/1922]. Graphite on paper. 14 x 11 cm.
Private collection.

OPP.22:309; PP.22:051; Z.XXX:310



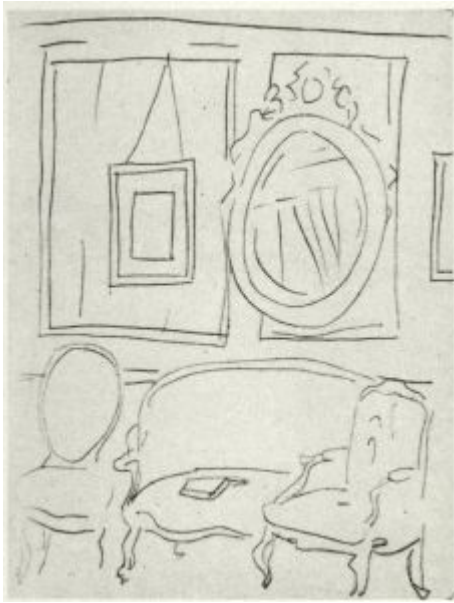
La porte de la maison ouverte sur le jardin. Dinard. [15-July~15-September/1922]. Graphite on paper. 14 x 11 cm. Private collection.

OPP.22:310; PP.22:064; Z.XXX:311

La maison et le jardin. Dinard. [15-July~15-September/1922]. Graphite on paper. 14 x 11 cm. Private collection.

OPP.22:311; PP.22:058; Z.XXX:312





Le salon. Dinard. [15-July~15-September/1922]. Graphite on paper. 14 x 11 cm. Private collection.

OPP.22:312; PP.22:088; Z.XXX:313



Feuilles. Dinard. [15-July~15-September/1922]. Graphite on paper. 14 x 11 cm. Private collection.

OPP.22:313; PP.22:068; Z.XXX:314



Feuilles. Dinard. [15-July~15-September/1922]. Graphite on paper. 14 x 11 cm. Private collection.

OPP.22:314; PP.22:069; Z.XXX:315

Feuilles sur un tige. Dinard. [15-July~15-September/1922]. Graphite on paper. 14 x 11 cm. Private collection.

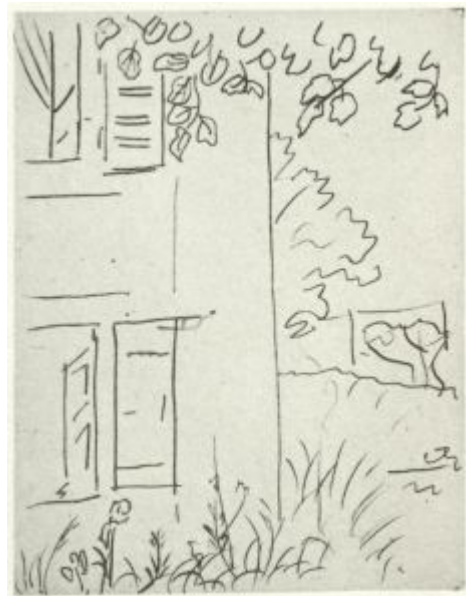
OPP.22:315; PP.22:070; Z.XXX:316





Feuilles. Dinard. [15-July~15-September/1922]. Graphite on paper. 14 x 11 cm. Private collection.

OPP.22:316; PP.22:071; Z.XXX:317



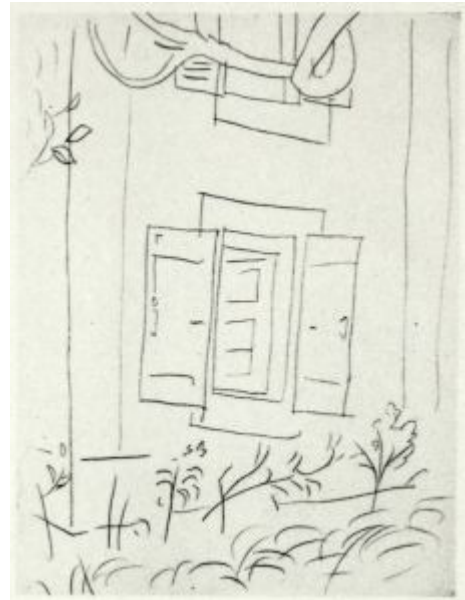
La maison et le jardin. Dinard. [15-July~15-September/1922]. Graphite on paper. 14 x 11 cm. Private collection.

OPP.22:317; PP.22:062; Z.XXX:318



Feuilles. Dinard. [15-July~15-September/1922]. Graphite on paper. 14 x 11 cm. Private collection.

OPP.22:318; PP.22:072; Z.XXX:319



Maison et jardin. Dinard. [15-July~15-September/1922]. Graphite on paper. 14 x 11 cm. Private collection.

OPP.22:319; PP.22:061; Z.XXX:320



Escalier et jardin. Dinard. [15-July~15-September/1922].
Graphite on paper. 14 x 11 cm. Private collection.

OPP.22:320; PP.22:065; Z.XXX:321



La maison. Dinard. [15-July~15-September/1922].
Graphite on paper. 14 x 11 cm. Private collection.

OPP.22:321; PP.22:063; Z.XXX:324



Maison et jardin. Dinard. [15-July~15-September/1922].
Graphite on paper. 14 x 11 cm. Private collection.

OPP.22:322; PP.22:059; Z.XXX:325



Grand vase de jardin. Dinard. [15-July~15-September/1922]. Graphite on paper. 14 x 11 cm.
Private collection.

OPP.22:323; PP.22:066; Z.XXX:326



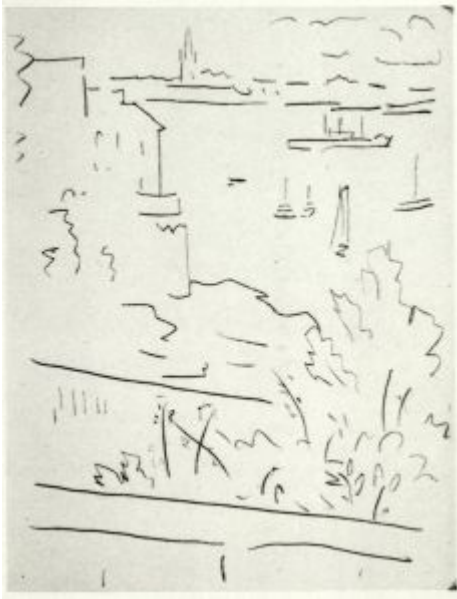
Maisons à Dinard. Dinard. [15-July~15-September/1922].
Graphite on paper. 14 x 11 cm. Private collection.

OPP.22:324; PP.22:045; Z.XXX:327



Maisons à Dinard. Dinard. [15-July~15-September/1922]. Graphite on paper. 14 x 11 cm.
Private collection.

OPP.22:325; PP.22:046; Z.XXX:328



Vue sur la mer. Dinard. [15-July~15-September/1922].
Graphite on paper. 14 x 11 cm. Private collection.

OPP.22:326; PP.22:048; Z.XXX:329



Maisons à Dinard. Dinard. [15-July~15-September/1922]. Graphite on paper. 14 x 11 cm.
Private collection.

OPP.22:327; PP.22:047; Z.XXX:330



Feuilles. Dinard. [15-July~15-September/1922]. Graphite on paper. 42 x 29 cm. Private collection.

OPP.22:328; PP.22:147; Z.XXX:331

Comptoir de fruits. Dinard. [15-July~15-September/1922]. Graphite on paper. 29 x 42 cm. Private collection.

OPP.22:329; PP.22:149; Z.XXX:333





Compotier de fruits. Dinard. [15-July~15-September/1922]. Graphite on paper. 29 x 42 cm. Private collection.

OPP.22:330; PP.22:150; Z.XXX:334

Le jardin. Dinard. [15-July~15-September/1922]. Graphite on paper. 29 x 42 cm. Private collection.

OPP.22:331; PP.22:155; Z.XXX:335





La façade de la maison. Dinard. [15-July~15-September/1922].
Graphite on paper. 42 x 29 cm. Private collection.

OPP.22:332; PP.22:157; Z.XXX:339

Intérieur. Dinard. [15-July~15-September/1922].
Graphite on paper. 42 x 29 cm. Private collection.

OPP.22:333; PP.22:161; Z.XXX:342





Mains et buste d'enfant. Dinard. [15-July~15-September/1922]. Graphite on paper. 42 x 29 cm. Private collection.

OPP.22:334; PP.22:113; Z.XXX:344

Rideau. Dinard. [15-July~15-September/1922]. Graphite on paper. 42 x 29 cm. Private collection.

OPP.22:335; PP.22:162; Z.XXX:348





Deux femmes au miroir et enfant. Dinard. [15-July~15-September/1922]. Graphite on paper. 42 x 29 cm. Private collection.

OPP.22:336; PP.22:127; Z.XXX:351

Deux femmes au miroir et enfant. Dinard. [15-July~15-September/1922]. Graphite on paper. 42 x 29 cm. Private collection.

OPP.22:337; PP.22:129; Z.XXX:353





Olga écrivain. Dinard. [15-July~15-September/1922]. Graphite on paper. 42 x 29 cm. Private collection.

OPP.22:338; PP.22:108; Z.XXX:356

Femme au voile. Dinard. [15-July~15-September/1922]. Graphite on paper. 42 x 29 cm. Private collection.

OPP.22:339; PP.22:104; Z.XXX:358





Nu assis. Dinard. [15-July~15-September/1922]. Graphite on paper. 42 x 29 cm. Private collection.

OPP.22:340; PP.22:098; Z.XXX:359

Vase de fleurs. Dinard. [15-July~15-September/1922]. Color pencils on paper [OIC]. 49 x 30 cm. Private collection.

OPP.22:341; PP.22:148; Z.XXX:361





Femme debout un bras derrière la tête. Dinard. [15-July~15-September/1922]. Graphite on paper. 34 x 24 cm. Private collection.

OPP.22:342; PP.22:166; Z.XXX:363

Nu assis. Dinard. [15-July~15-September/1922]. Graphite on paper. 14 x 11 cm. Private collection.

OPP.22:343; PP.22:136; Z.XXX:370





Nu debout, les bras levés. Paris. [15-July~15-September/1922].
Graphite on paper. 10 x 5,5 cm. Private collection.

OPP.22:346; PP.22:164; Z.XXX:374

Nu assis. [Dinard]. [15-July~15-September/1922]. India ink on paper. 16 x 18 cm. Private collection.

OPP.22:347; PP.22:099; Z.XXX:375



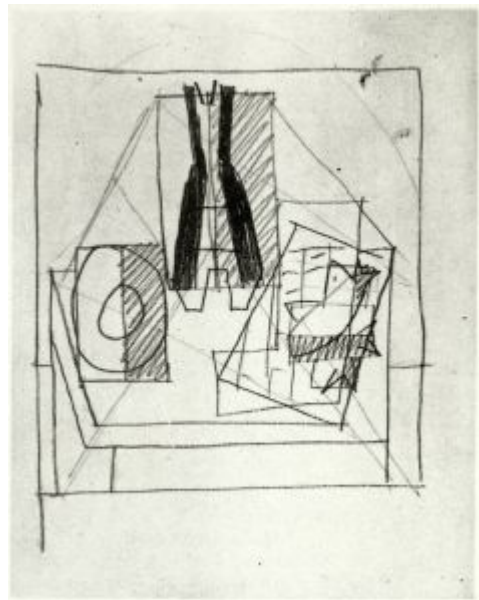


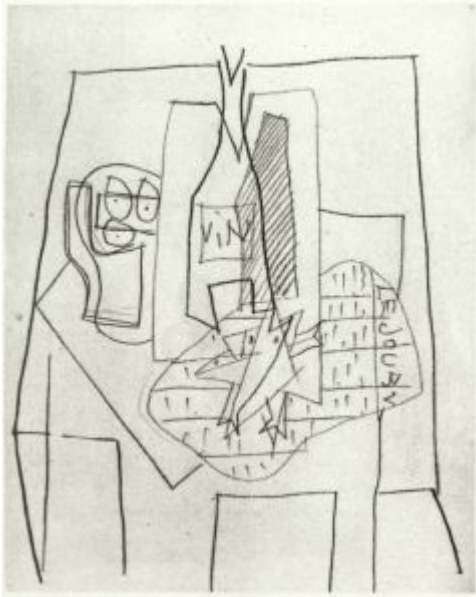
Tête de femme. Dinard. [15-July~15-September/1922]. Graphite on paper. 6,5 x 5,5 cm. Private collection.

OPP.22:348; PP.22:133; Z.XXX:376

Nature morte aux poissons. Dinard. [15-July~15-September/1922]. Graphite on paper. 14,5 x 11 cm. Private collection.

OPP.22:350; PP.22:202; Z.XXX:383



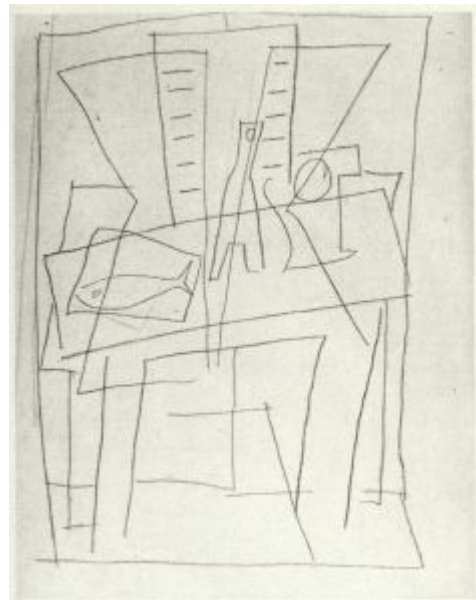


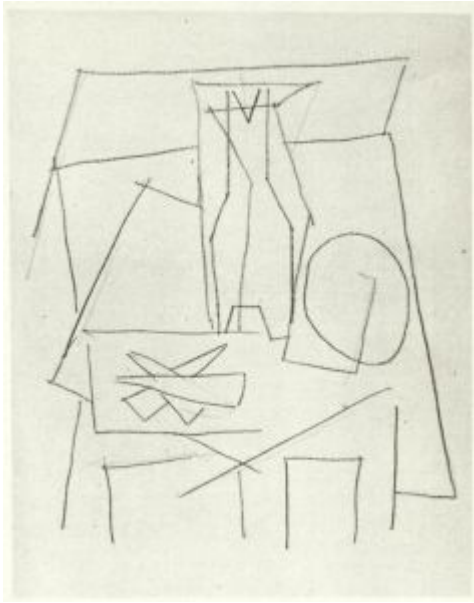
Nature morte aux poissons. Dinard. [15-July~15-September/1922]. Graphite on paper. 14,5 x 11 cm. Private collection.

OPP.22:351; PP.22:200; Z.XXX:385

Nature morte au poisson. Dinard. [15-July~15-September/1922]. Graphite on paper. 14,5 x 11 cm. Private collection.

OPP.22:352; PP.22:198; Z.XXX:386



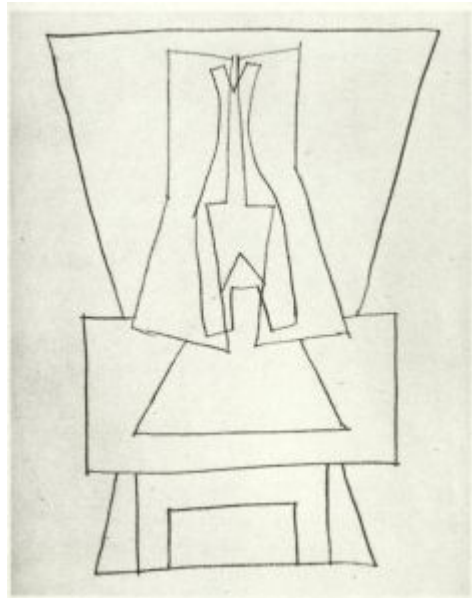


Nature morte aux poissons. Dinard. [15-July~15-September/1922]. Graphite on paper. 14,5 x 11 cm. Private collection.

OPP.22:353; PP.22:197; Z.XXX:387

Bouteille sur une table. Dinard. [15-July~15-September/1922]. Graphite on paper. 14,5 x 11 cm. Private collection.

OPP.22:354; PP.22:195; Z.XXX:388





Cavalier. Dinard. [15-July~15-September/1922]. Graphite on paper. 14,5 x 11 cm. Private collection.

OPP.22:355; PP.22:193; Z.XXX:390



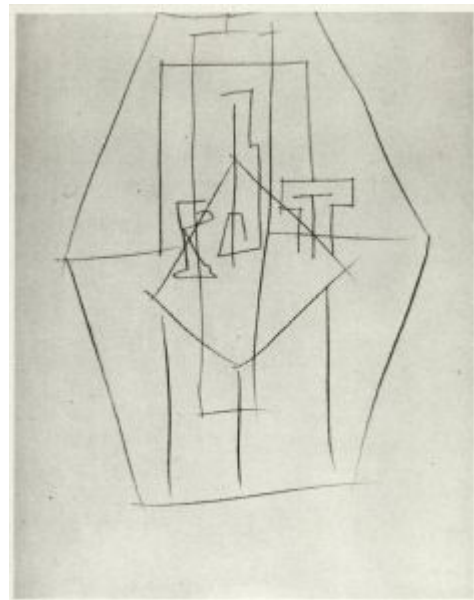
Cavalier et personnages. Dinard. [15-July~15-September/1922]. Graphite on paper. 14,5 x 11 cm. Private collection.

OPP.22:356; PP.22:194; Z.XXX:391



Nature morte sur une table. Dinard. [15-July~15-September/1922]. Graphite on paper. 14,5 x 11 cm. Private collection.

OPP.22:358; PP.22:192; Z.XXX:393



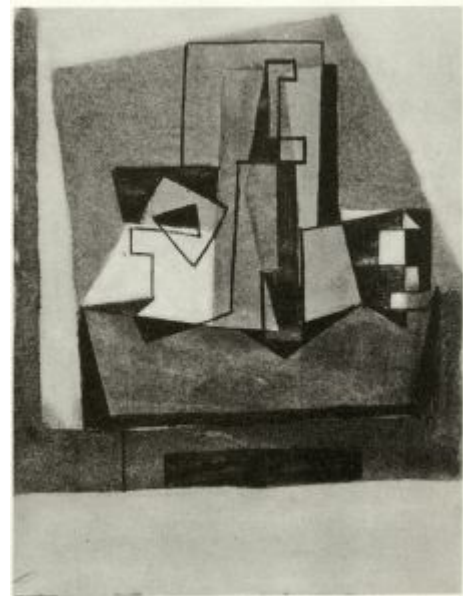
Nature morte sur une table. [Dinard]. [15-July~15-September/1922]. Graphite on paper. 14,5 x 11 cm. Private collection.

OPP.22:359; PP.22:213; Z.XXX:394



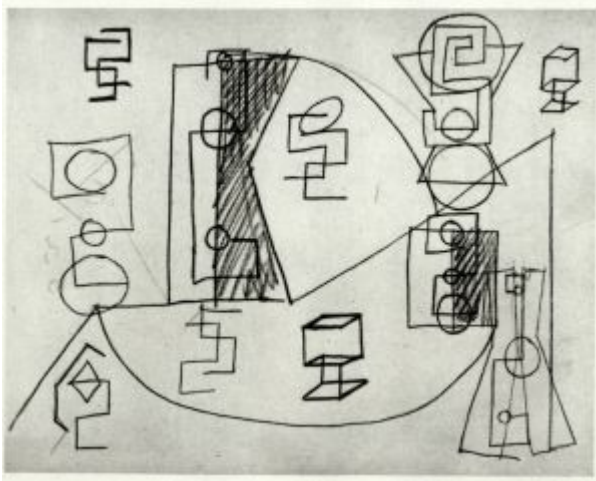
Nature morte sur une table. Dinard. [15-July~15-September/1922]. Gouache & graphite on paper [OiC]. 14,5 x 11 cm. Private collection.

OPP.22:360; PP.22:211; Z.XXX:395



Nature morte sur une table. Dinard. [15-July~15-September/1922]. Gouache & graphite on paper [OiC]. 14,5 x 11 cm. Private collection.

OPP.22:361; PP.22:207; Z.XXX:397

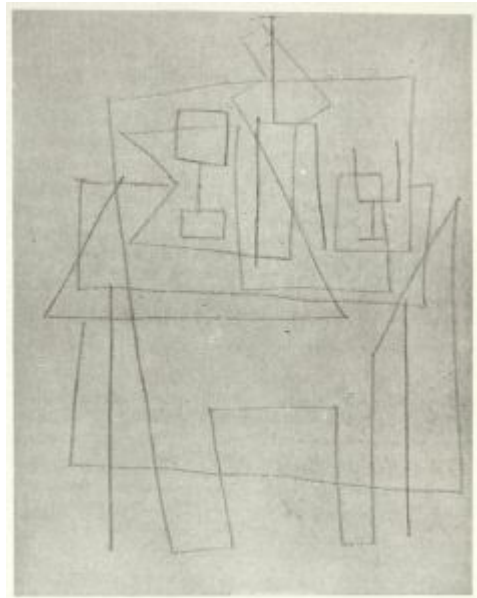


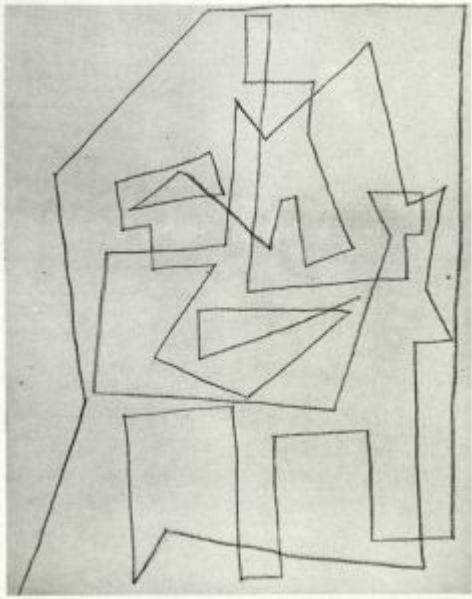
Bouteille et verres. Dinard. [15-July~15-September/1922]. Graphite on paper. 11 x 14,5 cm. Private collection.

OPP.22:362; PP.22:221; Z.XXX:399

Bouteille, compotier et verre. Dinard. [15-July~15-September/1922]. Graphite on paper. 14,5 x 11 cm. Private collection.

OPP.22:363; PP.22:215; Z.XXX:401



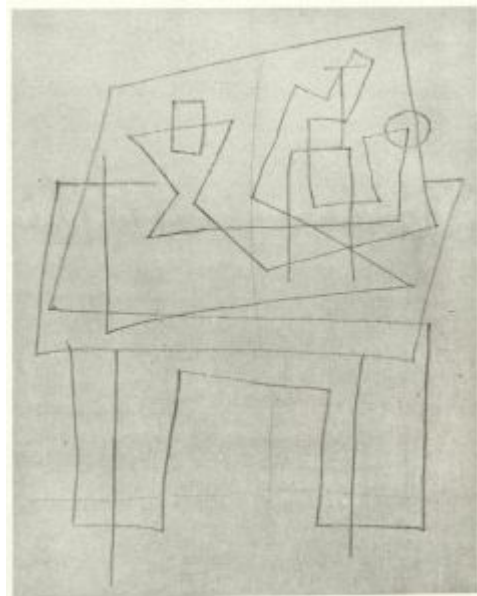


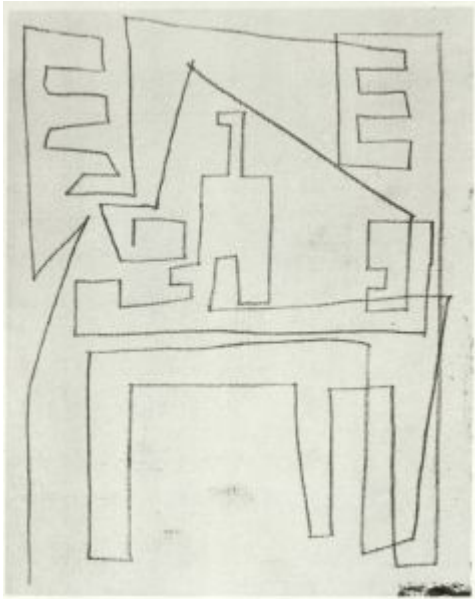
Bouteille, compotier et verre. Dinard. [15-July~15-September/1922]. Graphite on paper. 14,5 x 11 cm. Private collection.

OPP.22:364; PP.22:216; Z.XXX:402

Bouteille, compotier et verre. Dinard. [15-July~15-September/1922]. Graphite on paper. 14,5 x 11 cm. Private collection.

OPP.22:365; PP.22:217; Z.XXX:403



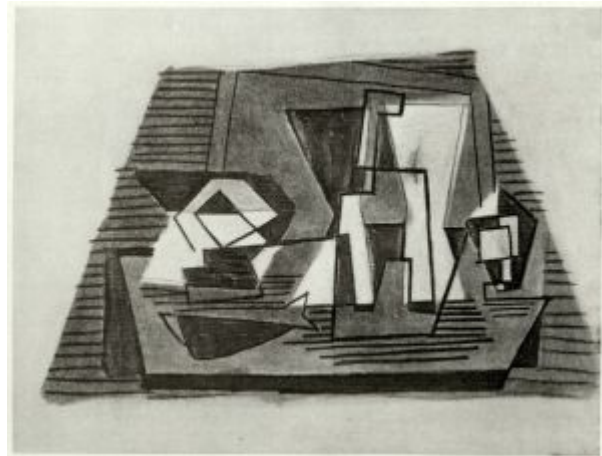


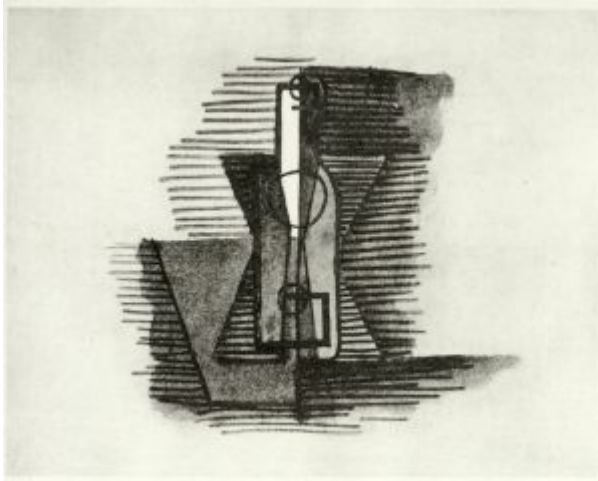
Nature morte sur une table carrée. Dinard. [15-July~15-September/1922]. Graphite on paper. 14,5 x 11 cm. Private collection.

OPP.22:366; PP.22:218; Z.XXX:404

Nature morte au poisson. Dinard. [15-July~15-September/1922]. Gouache & graphite on paper [OïC]. 11 x 14,5 cm. Private collection.

OPP.22:367; PP.22:206; Z.XXX:406





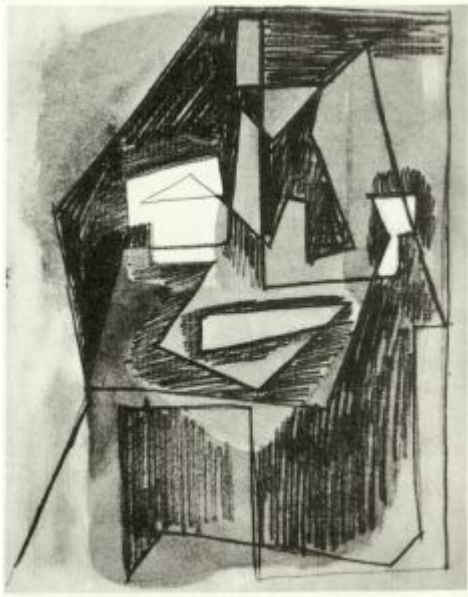
Bouteille. Dinard. [15-July~15-September/1922].
Gouache [OïC]. 11 x 14,5 cm. Private collection.

OPP.22:368; PP.22:222; Z.XXX:407

Nature morte sur une table carrée. Dinard. [15-
July~15-September/1922]. Gouache & graphite on
paper [OïC]. 14,5 x 11 cm. Private collection.

OPP.22:369; PP.22:223; Z.XXX:408





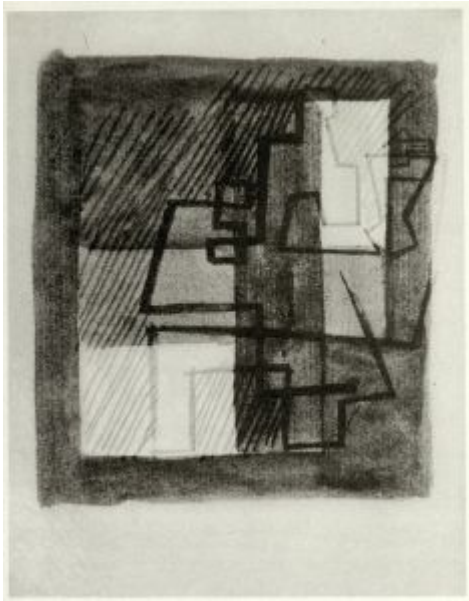
Nature morte au poisson sur une table carrée. Dinard. [15-July~15-September/1922]. Gouache & graphite on paper [OïC]. 14,5 x 11 cm. Private collection.

OPP.22:370; PP.22:224; Z.XXX:409



Nature morte sur une table carrée. Dinard. [15-July~15-September/1922]. Gouache & graphite on paper [OïC]. 14,5 x 11 cm. Private collection.

OPP.22:371; PP.22:225; Z.XXX:412



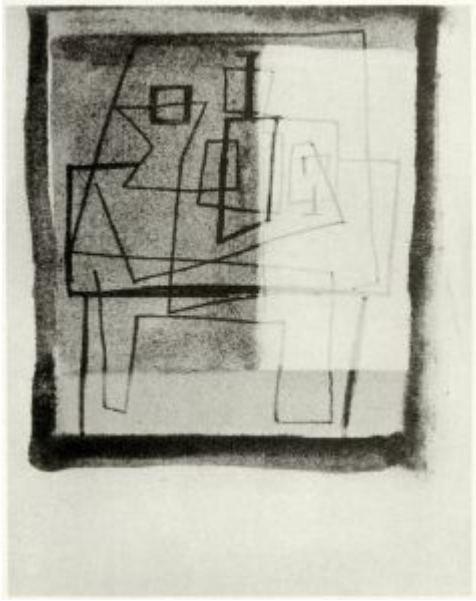
Nature morte sur une table carrée. Dinard. [15-July~15-September/1922]. Gouache & graphite on paper [OïC]. 14,5 x 11 cm. Private collection.

OPP.22:372; PP.22:231; Z.XXX:414



Nature morte sur une table carrée. Dinard. [15-July~15-September/1922]. Gouache & graphite on paper [OïC]. 14,5 x 11 cm. Private collection.

OPP.22:373; PP.22:232; Z.XXX:415



Nature morte sur une table carrée. Dinard. [15-July~15-September/1922]. Gouache & graphite on paper [OiC]. 14,5 x 11 cm. Private collection.

OPP.22:374; PP.22:233; Z.XXX:416

Trois poissons sur un journal. Dinard. [15-July~15-September/1922]. Gouache & graphite on paper [OiC]. 14,5 x 11 cm. Private collection.

OPP.22:375; PP.22:227; Z.XXX:417





Deux femmes courant sur la plage (La course). Dinard. [June~September] Late-Summer/1922. Gouache on plywood. 32,5 x 41,1 cm. Musée Picasso, Paris. Dation 1979.

OPP.22:001; MPP:78; P.III:1260; PP.22:163; Z.IV:380; AB.12*:156p; AB.39a*:167; AB.57*:56p; BD.16:50p; BH.06*:196-197p; BP.21:51p; DA.03:55; DB.89:87p; DC.87:349-350; DD.61:208p; DQ.74:202-203p; DW.05:46p; EC.02:405; FS.82:106p; GA.14:26-27p; GB.87:110; GC.96:180p; GP.96:136p; HD.01:37; HD.04:34-35p; HN.13:48p; IC.05*:35; IW.93:53p; JB.08:39; JB.65:77; JC.98*:214; JF.96:94-95p; JL.71:86p; JM.93:64p; JR.07:216p; JS.94:64p; LM.06:46; LO.06a*:n/a; LO.90c*:142; MA.01a*:n/a; MA.08a*:n/a; MA.22a*:111; MM.00:62p; MN.80*:n/a; MP.85:74; MR.59*:32; MS.24*:11; NM.08:9; NY.41b*:n/a; OD.96:58p; OW.13:54-55p; PA.04e*:n/a; PA.21f*:131; PA.79a*:124; PD.09:234p; PD.19:31p; PH.57*:101; RB.99:76p; RO.17*:167; RP.06*:75; RP.60*:100; RS.88:59p; SN.92:22; SY.11*:n/a; TI.71:25; TY.03*:n/a; UP.00:512; VR.90:44p; WR.80*:238p; WW.91:292p; YB.08:53p

Famille au bord de la mer. Dinard. Late-Summer/1922 [Summer~Fall/1923]. Oil on wood panel. [17,5] 17,6 x 20,2 cm. Musée Picasso, Paris. Dation 1979.

OPP.22:002; MPP:80; P.III:1216; PP.22:092; AM.05*:n/a; BS.12:24p; CR.93:5; DF.10:50-51p; EC.02:407; GB.87:114; GC.07:63p; GC.96:181p; GD.11:27p; GP.96:138p; HN.00*:2; HT.34*:44; IC.05:59p; JC.98*:180; LO.90c:271p; MA.08a*:n/a; MP.85:75; MS.24*:12; NM.08:94p; PA.04e*:n/a; PA.17b*:168; PA.79a*:126; RS.88:64p; SG.96:4.7; TY.03*:n/a; UP.00:510; VR.90:58p; WS.94:52p; WS.95a*:63; WW.91:275p





Portrait de Paulo. Dinard. Late-Summer/1922. Pastel on paper. 61,5 x 47,5 cm. Private collection.

OPP.22:004; P.III:1238; PP.22:085; Z.XXX:357; WR.96:321p

Mère et enfant. Dinard. Late-Summer/1922. Oil on canvas. 100 x 81 cm. The Baltimore Museum of Art. (Inv 50.279). The Cone Collection, formed by Dr. Claribel Cone & Miss Etta Cone, Baltimore, MD.

OPP.22:005; P.III:1195; PP.22:118; Z.IV:371;
CG.93:169; CP.67:92; DT.78:40; EC.02:431;
JL.71:15p; JR.07:214p; JR.62*:4.33; LU.93:305;
MD.02:153p; MR.53:76p; NY.55g*:97; TI.71:104p;
UP.00:509; WR.80*:236p; WR.96:51p; WS.94:60p;
WS.95a:34p; WW.91:288p; WW.94*:90





Mère et enfant. Dinard. Late-Summer/1922. Pencil on paper. 42 x 30,5 cm. Private collection.

OPP.22:006; P.III:1240; PP.22:123; Z.XXX:360; GC.96:183p; NM.08:96p; UP.00:508; WR.96:49p

Nature morte à la guitare. Dinard. Late-Summer/1922. Oil on canvas. [81 x 100] [83 x 102] 83 x 102,5 cm. Museum Sammlung Rosengart, Luzern. Siegfried & Angela Rosengart Collection.

OPP.22:008; FM:965; P.III:1264; PP.22:043; Z.IV:418; AM.67*:55; EC.02:332; FE.57:10; GC.96:178-179p; GP.32*:122; HS.98*:118; HU.68*:37; IW.93:43p; JB.92*:79; JL.66*:123; JP.68:13; KZ.32*:117; LC.63a*:n/a; MI.61*:50; MJ.55*:57; MM.67:31; MU.55*:51; NY.31b*:n/a; PA.30c*:n/a; PA.59b*:105; RP.60*:101; RT.54*:145; SG.85*:144; SP.53*:12; ST.88*:31; WW.91:284p





Verre et paquet de tabac. Dinard. [Late-Summer]/1922. Oil on canvas. 16,2 x 21,9 cm. Philadelphia Museum of Art. (Inv 1952.61.97). A. E. Gallatin Collection, 1952.

OPP.22:014; PP.22:183; Z.IV:413; CG.08*:117p; NY.36l*:n/a; PH.43*:n/a

Buste de femme, les bras levés. Dinard. Late-Summer/1922 [1923]. Oil on canvas. 65 x 54 cm. Michael and Judy Steinhardt Collection, NY. Formerly Mr. and Mrs B. E. Bensinger Collection, Chicago.

OPP.22:015; P.III:1294; PP.22:168; Z.XXX:381; CG.12*:18; CH.68a*:29; WW.91:289p





Mère et enfant (Olga et Paulo). Dinard. Late-Summer/1922. Watercolor & pencil in sketchbook. 15,5 x 11,5 cm. Musée Picasso, Paris.

OPP.22:016; P.III:1192; PP.22:114; GG.86*:76; WR.96:48p

Maternité au rideau rouge. Dinard. Late-Summer/1922. Oil on canvas. 130 x 98 cm. Marina Picasso Collection. (Inv 12311). Courtesy Galerie Jan Krugier, Geneva.

OPP.22:017; P.III:1200; PP.22:120; GC.96:182p; GP.96:140p; MP.81*:133; NM.08:94p; WR.96:50p





Famille au bord de la mer (Étude). Dinard. Late-Summer/1922. Pencil on paper. 49,2 x 64,2 cm. Musée Picasso, Paris. Dation 1979.

OPP.22:018; MPP:963; PP.22:093; GU.00:27; IC.05*:34; JO.06*:n/a; MA.08a*:n/a; PP.20*:150; SP.04*:n/a; TY.03*:n/a; WS.95a*:61

Buste de femme à la chemise. Paris. Late-Summer/1922. Oil on canvas. 55,2 x 46 cm. Abigail and Leslie H. Wexner Collection. Formerly Richard Gray Gallery, Chicago; Christie's. #11, 9854, 11/06/01.

OPP.22:023; P.III:1247; PP.22:144; Z.IV:390; CG.93:234; LM.33*:n/a





Buste de femme. Paris. Late-Summer/1922. Oil on canvas. 61 x 50,2 cm. National Gallery of Art, Washington, DC. (Inv 1963.10.189). Chester Dale Collection.

OPP.22:034; PP.22:146; Z.IV:396; CH.43*:53; NY.31a*:7; PI.31b*:4; TD.38*:83; WA.10*:n/a; WA.52b*:53; WA.65b*:n/a; WR.96:104p

Comptoir, bouteille et verre. Dinard. [Late-Summer]/1922. Oil on canvas. [45,4 x 55,6] 45,5 x 55,7 cm. Galerie Kornfeld und Cie, Bern. #130, 276, 06/17/22. Formerly Christie's. #235, 11794, 06/23/16; Helly Nahmad Collection, Monaco/London; Galería Leandro Navarro; Christie's. #458, 2354, 11/04/10; Sotheby's. #369, L05008, 06/21/05.

OPP.22:037; PP.22:041; Z.XXX:278; BA.18a*:81; GE.86a*:185; HN.13*:90p; PA.18e*:89; TK.86*:PC-6





Femme en blanc. Dinard. Late-Summer/1922. Oil on canvas. 65 x 54 cm. Helly Nahmad Collection, Monaco/London.

OPP.22:041; P.III:1228; PP.22:109; Z.IV:389;
CB.11*:123p; HN.13*:61p; LB.58:66p; PH.16b*:59

Femme assise au bord de la mer. Dinard. Late-Summer/1922. Oil on canvas. 60,3 x 50,2 cm. The Minneapolis Institute of Arts. (Inv 61.36.24). Bequest of Putnam Dana McMillan.

OPP.22:042; P.III:1236; PP.22:132; Z.IV:383;
JR.62*:4.29; MA.22a*:113; NY.23a*:n/a;
NY.52c*:20; PH.16b*:57; RO.17:28p; UW.88*:47





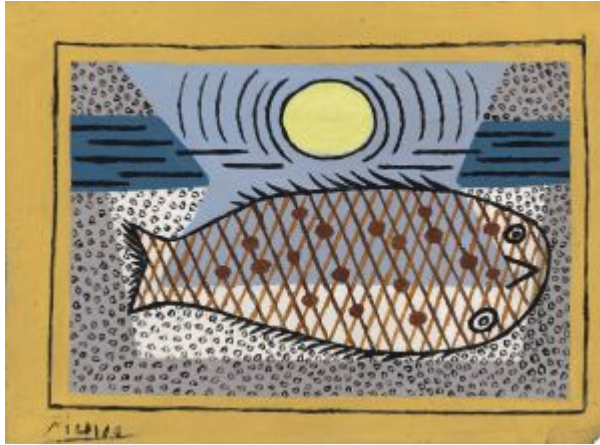
Verre, bouteille, poisson sur un journal. Dinard. [Late-Summer]/1922. Watercolor, black crayon & pencil on paper. [15 x 11] 14 x 10,8 cm. Sotheby's. #301, N08197 , 05/04/06. Formerly Josephine & Walter Buhl Ford II Collection; Justin K. Thannhauser Collection.

OPP.22:043; PP.22:209; Z.IV:403; BS.55:91

Portrait de Paulo. Dinard. Late-Summer/1922. Oil on canvas. 34,5 x 30 cm. Museo Picasso, Málaga. Depósito del Ministerio de Cultura. (Inv P9.2).

OPP.22:044; P.III:1244; PP.22:084; Z.XXX:300; BA.03a*:122; DP.20*:49; MR.03*:55p; NC.17*:60





Le poisson échoué au soleil. Dinard. [Late-Summer]/1922. Oil on panel. 14,3 x 19 cm. Christie's. #15C, 12069, 05/12/16.

OPP.22:047; PP.22:170; Z.XXX:282; BA.18*:28p

Nature morte à la bouteille de vin et aux raisins. Dinard. [Late-Summer/1922]. Oil on canvas. 46 x 55,5 cm. Kunstmuseum Winterthur, Switzerland. Bequest of Clara and Emil Friedrich-Jezler, 1973.

OPP.22:050; P.III:1257; PP.22:175; Z.IV:407; CG.93:122; MF.06*:42





Vue sur Saint-Servan. Dinard. Late-Summer/1922. Lead pencil on paper. [10,5 x 13,5] 11 x 14 cm. The Picasso Estate.

OPP.22:066; P.III:1186; PP.22:049; Z.XXX:323

Paysage de Dinard. Dinard. Late-Summer/1922. Oil on canvas. 46 x 55 cm. The Picasso Estate.

OPP.22:067; P.III:1187; PP.22:055; Z.XXX:366; JR.07:213p





L'embouchure. Dinard. Late-Summer/1922. India ink on paper. 29 x 41 cm. Private collection.

OPP.22:068; P.III:1188; PP.22:053; Z.IV:372

Olga et Paulo tenant un oiseau. Dinard. Late-Summer/1922. Lead pencil on paper. 42 x 29 [30,5] cm. Private collection.

OPP.22:069; P.III:1189; PP.22:115; Z.XXX:349; GG.86*:77





Olga et Paulo. Dinard. Late-Summer/1922. Lead pencil on paper.
42 x 29 [30,5] cm. Private collection.

OPP.22:070; P.III:1190; PP.22:121; Z.XXX:355; GG.86*:77

Paulo bébé. [Dinard]. [Late-Summer]/1922. Pastel on paper.
108 x 72,5 [75] cm. The Picasso Estate.

OPP.22:071; P.III:1191; PP.21:312; Z.XXX:263





Vue de Saint-Malo. Dinard. Late-Summer/1922. [India ink] pencil on paper. 29 x 41,9 [41] cm. Christie's. #161, 7858, 06/24/10. Formerly Christie's. #0010, 5485, 12/03/07; Estate of Paul Rosenberg.

OPP.22:072; P.III:1193; PP.22:054; Z.IV:373; AB.39a*:171

Mère et enfant (Olga et Paulo). Dinard. Late-Summer/1922. Lead pencil on paper. 41 x 29 cm. Private collection.

OPP.22:073; P.III:1194; PP.22:116; Z.IV:369; WW.91:288p





Mère et enfant (Portrait d'Olga). Dinard. Late-Summer/1922.
Oil on canvas. 130 x 98 cm. Mr. and Mrs. Leonard Riggio.

OPP.22:074; P.III:1196; PP.22:119; MA.86*:12; MI.01*:56

Mère et enfant. Dinard. Late-Summer/1922. Oil on
canvas. [100] 130 x 81 cm. Private collection. Formerly
Walter P. Chrysler, Jr. Collection, NY..

OPP.22:075; P.III:1197; PP.22:117; Z.IV:370;
HK.65:94p; JC.40:118p; JR.62*:4.32; LA.41a*:35;
LW.13:8; NY.23a*:5; NY.23a*:n/a; NY.30j*:16;
NY.33e*:n/a; NY.38h*:30; NY.39a*:8; NY.40o*:8;
SF.39a*:L-200





Vue de Saint-Malo. Dinard. Late-Summer/1922.
India ink on paper. 29 x 41,5 [41] cm.
Nationalgalerie, Museum Berggruen, Staatlichen
Museen zu Berlin.

OPP.22:076; P.III:1198; PP.22:050; Z.IV:374;
BL.06*:121; BR.96*:40

Vue de Dinard. Dinard. Late-Summer/1922. India ink on
paper. 41 x 29 cm. The Solomon R. Guggenheim Museum,
NYC. (Inv 78.2514.T50). Thannhauser Collection.

OPP.22:077; P.III:1199; PP.22:154; Z.IV:375;
AB.57*:n/a; TC.92:20p





Nature morte au comptoir. Dinard. Late-Summer/1922. Oil on canvas. 14 x 22 cm. Fundación Almine & Bernard Ruiz-Picasso para el Arte.

OPP.22:078; P.III:1201; PP.22:188; Z.XXX:285; CG.08*:116p; MI.01*:66; PA.18e*:88

Vue de Dinard. Dinard. Late-Summer/1922. Lead pencil on paper. [30,5] 29 x 42 cm. Private collection.

OPP.22:079; P.III:1202; PP.22:153; Z.XXX:340





La maison et la mer. Dinard. Late-Summer/1922. Lead pencil on paper. 42 x 29 [30,5] cm. Private collection.

OPP.22:080; P.III:1203; PP.22:151; Z.XXX:338



La maison. Dinard. Late-Summer/1922. Lead pencil on paper. 42 x 29 [30,5] cm. Private collection.

OPP.22:081; P.III:1204; PP.22:156; Z.XXX:332



Coin de salon. Dinard. Late-Summer/1922. Lead pencil on paper.
42 x 29 [30,5] cm. Private collection.

OPP.22:082; P.III:1205; PP.22:160; Z.XXX:341

Composition aux rayures noires.
Dinard. Late-Summer/1922. Oil on canvas.
14 x 22 cm. The Picasso Estate.

OPP.22:083; P.III:1206; CG.08*:116p;
PA.18e*:90





Nu féminin debout. Dinard. Late-Summer/1922. Pencil on paper. 41,9 x 29,2 cm. The Metropolitan Museum of Art, NYC. (Inv 1980.21.22). Bequest of Grégoire Tarnapol, 1979, & Gift of Alexander Tarnapol, 1980.

OPP.22:084; P.III:1207; PP.22:101; Z.IV:377; AB.39a*:168; DR.86*:21p; GT.10*:70; HT.34*:129; JC.98*:212; MG.92*:n/a; NB.96:17; NY.95b*:n/a; RD.00*:91; RO.17*:168; UW.88*:50

Nature morte au verre. Dinard. Late-Summer/1922. Oil on canvas. 48,5 x 32 cm. The Picasso Estate.

OPP.22:085; P.III:1208; PP.22:190; Z.XXX:287; CG.08*:117p; LE.07*:11; TO.14*:17





Verre. Dinard. Late-Summer/1922. Oil on canvas.
[16,3] 16 x 22 cm. Sotheby's. #40, PF1416,
12/04/14. Formerly Galería Theo, Madrid.

OPP.22:086; P.III:1209; PP.22:179; Z.IV:412;
MA.77b*:33

La porte de la maison. Dinard. Late-Summer/1922. Lead pencil on paper.
[30,5] 29 x 42 cm. Private collection.

OPP.22:087; P.III:1210; PP.22:158;
Z.XXX:337; GG.86*:77





Le salon. Dinard. Late-Summer/1922. Lead pencil on paper. [30,5] 29 x 42 cm. Private collection.

OPP.22:088; P.III:1211; PP.22:159; Z.XXX:336; GG.86*:77

Famille au bord de la mer (Étude). Dinard. Late-Summer/1922 [1922~1923]. Pencil on paper. 70,4 x 106 cm. Private collection.

OPP.22:089; P.III:1212; PP.22:094; Z.V:173





Famille au bord de la mer (Étude). Dinard. Late-Summer/1922 [1922~1923]. Pencil on paper. 70,4 x 106 cm. Private collection.

OPP.22:090; P.III:1213; PP.22:095; Z.V:174

Famille au bord de la mer (Étude). Dinard. Late-Summer/1922 [Early/1923]. Red & black chalk on paper. 72,5 x 108 cm. Kunstmuseum Bern. Graphische Sammlung, Donation Justin K. Thannhauser, 1973.

OPP.22:091; P.III:1214; PP.22:096; Z.V:175; CH.10*:135p; HK.65:91p; JC.98*:182; JR.62*:4.34; KB.01*:82; LS.75:43; WS.95a*:62





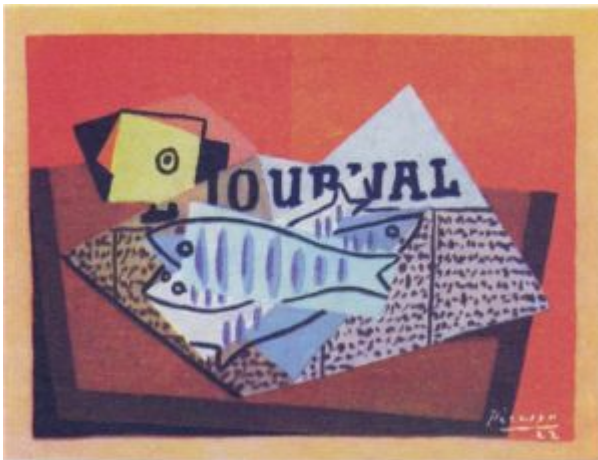
Famille au bord de la mer (Étude). Dinard. Late-Summer/1922. Graphite on paper. 10,5 x 13,5 cm. Private collection.

OPP.22:092; P.III:1215; PP.22:091; Z.XXX:322; PA.17b*:101; UW.88:51b

Morceau de poisson. Dinard. Late-Summer/1922. Oil on canvas. 22 x 27 cm. Museum of Modern and Contemporary Art of Trento and Rovereto. Formerly Private collection, NY.

OPP.22:093; P.III:1217; PP.22:169; Z.IV:398; JB.92:198p; JR.62*:3.32





Poissons sur un journal. Dinard. Late-Summer/1922. Oil on canvas. 27 x 35 cm. Private collection, England.

OPP.22:094; FM:962; P.III:1218; PP.22:171; Z.IV:397; FE.57:9; NY.23e*:n/a

Bouteille, verre, compotier, poissons. Dinard. Late-Summer/1922. Oil on canvas [Oic]. 60 x 81 cm. Burnt. 1940. Formerly Clara and Emil Friedrich-Jezler Collection, Zurich.

OPP.22:095; P.III:1219; PP.22:201; Z.IV:404





Nu à la draperie. Dinard. Late-Summer/1922. Oil on panel. 19 x 14 cm. Wadsworth Atheneum Museum of Art, Hartford, CT. The Ella Gallup Sumner & Mary Catlin Sumner Collection.

OPP.22:096; P.III:1220; PP.22:103; Z.IV:382; AB.39a*:169; AB.46:125p; AB.57*:n/a; CG.93:231; HT.34*:41; JR.62*:4.25; MF.01*:17; UP.00:511; WR.80*:235p

Nu assis à la draperie. Dinard. Late-Summer/1922. Oil on canvas [OiC]. [18,8 x 12,2] 19 x 14 cm. Private collection.

OPP.22:097; P.III:1221; PP.22:141; Z.IV:381



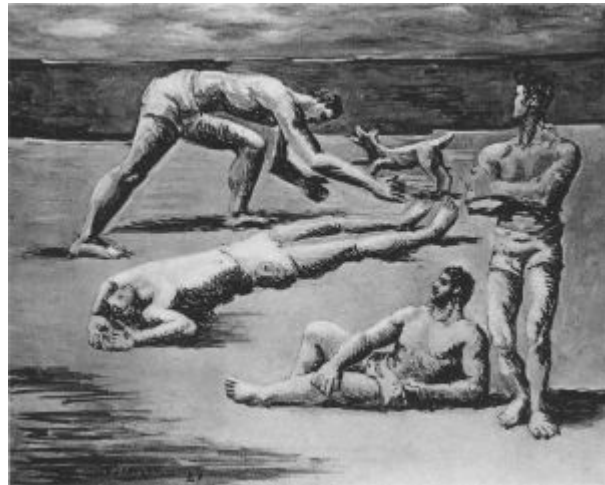


Femme au peignoir vert. [Dinard]. Late-Summer/1922. Oil on canvas. [130 x 97] 130,5 x 96,5 cm. Museum Ludwig, Köln. (Inv ML 76/3044). Überweisung Wallraf-Richartz-Museum 1976.

OPP.22:098; P.III:1222; PP.22:040; Z.IV:388; GP.32*:124; KZ.32*:119; MD.02*:157p; TB.10*:42

Baigneurs et chien. [Dinard]. Late-Sumer/1922. Oil on canvas [Oic]. [38 x 46] 39,4 x 45,7 cm. Private collection.

OPP.22:099; P.III:1223; PP.22:089; Z.IV:379; DK.61*:14





Deux femmes au miroir et enfant. Dinard. Late-Summer/1922.
Lead pencil on paper. 42 x 30,5 cm. Private collection.

OPP.22:100; P.III:1224; PP.22:130; Z.XXX:354

Deux femmes au miroir et enfant. Dinard. Late-Summer/1922. Lead pencil on paper. 42 x 30,5 cm. Private collection.

OPP.22:101; P.III:1225; PP.22:128; Z.XXX:352





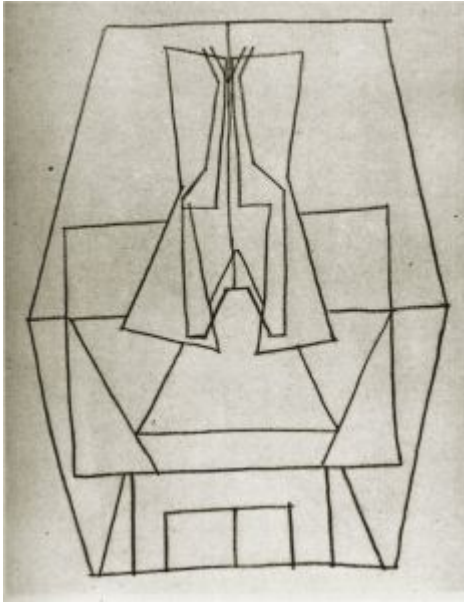
Nu assis. Dinard. Late-Summer/1922. Lead pencil on paper.
[14] 14,5 x 11 cm. Private collection.

OPP.22:102; P.III:1226; PP.22:134; Z.XXX:367

La coiffure. Dinard. Late-Summer/1922. Oil on canvas. 18 x 16 cm. The Picasso Estate.

OPP.22:103; P.III:1227





Bouteille sur une table. Dinard. Late-Summer/1922. Lead pencil on paper. [15 x 11,5] 14,5 x 11 cm. Private collection.

OPP.22:104; P.III:1229; PP.22:196; Z.XXX:389; GG.86*:74

Femme dans un fauteuil. Dinard. Late-Summer/1922. Oil on canvas. 91,5 x 62,5 cm. The Solomon R. Guggenheim Museum, NYC. Thannhauser Collection.

OPP.22:105; P.III:1230; PP.22:137; Z.IV:391; NY.55m*:24; SF.55*:n/a; TC.92:68p





Nu assis. Dinard. Late-Summer/1922. Oil on canvas. [64 x 52,5] 65 x 53,8 cm. Smith College Museum of Art, Northampton, MA. (Inv 1993:19). Gift of the Carey Walker Foundation. Formerly Dr. Herschel Carey Walker Collection, NY.

OPP.22:106; P.III:1231; PP.22:142; Z.XXX:371; JR.62*:4.30; VO.16*:51p

Nature morte au poisson. Dinard. Late-Summer/1922. Lead pencil & [tempera] gouache on paper [OïC]. [15] 14,5 x 11 cm. Private collection.

OPP.22:107; P.III:1232; PP.22:212; Z.XXX:396



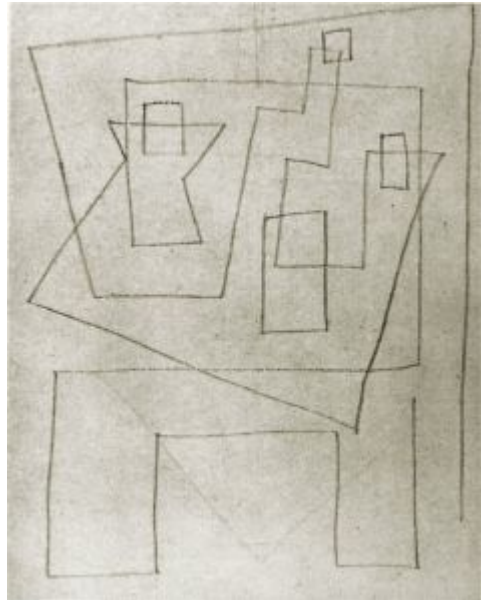


Nature morte aux poisson. Dinard. Late-Summer/1922. Lead pencil on paper. 14,5 x 11 cm. Private collection.

OPP.22:108; P.III:1233; PP.22:199; Z.XXX:384; GG.86*:74

Bouteille, compotier et verre. Dinard. Late-Summer/1922. Lead pencil on paper. 14,5 x 11 cm. Private collection.

OPP.22:109; P.III:1234; PP.22:214; Z.XXX:400; GG.86*:74





Nu féminin debout. Dinard. Late-Summer/1922. Lead pencil on paper. [14] 19 x 7,5 cm. The Picasso Estate.

OPP.22:110; P.III:1235; PP.22:100; Z.XXX:368

Mère et enfant au bord de la mer. Dinard. Late-Summer/1922. Oil on canvas [Oic]. 100 x 81 cm. Private collection.

OPP.22:111; P.III:1237; PP.22:131; Z.IV:384





Nu à mi-corps de dos. [Dinard]. Late-Summer/1922. [Pastel] Chalk on wove paper. 107,6 x 72,1 cm. The Metropolitan Museum of Art, NYC. (Inv 1984.433.276). Bequest of Scofield Thayer, 1982.

OPP.22:112; P.III:1239; PP.21:257; Z.IV:306; GT.10*:69; HT.34*:118; JC.98*:213; NY.24a*:37

Paulo debout. Dinard. Late-Summer/1922. Lead pencil on paper. [13,3 x 10,5] 14 x 11 cm. Private collection.

OPP.22:113; P.III:1241; PP.22:086; Z.XXX:298





Portrait de Paulo. Dinard. Late-Summer/1922. Lead pencil on paper. [13,5 x 10,5] 14 x 11 cm. Private collection.

OPP.22:114; P.III:1242; PP.22:079; Z.XXX:306; GG.86*:75

Tête d'enfant (Paul Picasso). Dinard. [1921] Late-Summer/1922. Oil on canvas. 33,5 x 27 cm. Fundación Almine & Bernard Ruiz-Picasso para el Arte.

OPP.22:115; P.III:1243; PP.21:300; PP.22:235; Z.IV:434; Z.XXX:148; GP.32*:n/a; KZ.32*:106; LO.18*:n/a





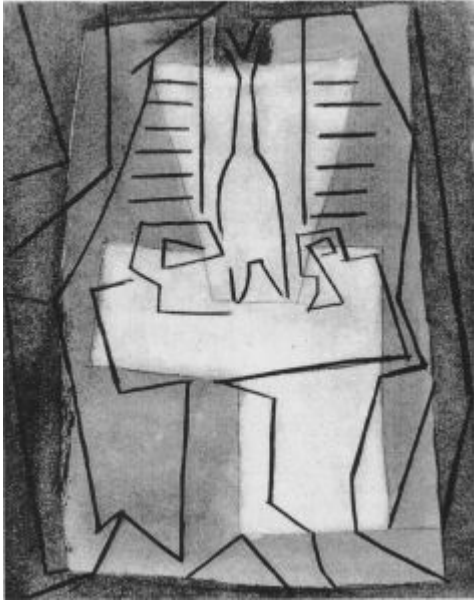
Études (L'Echo de Paris). Dinard. Late-Summer/1922. [Ink]. 20 x 15 cm. The Picasso Estate.

OPP.22:116; P.III:1245

Études (L'Echo de Paris). Dinard. Late-Summer/1922. [Ink]. 20 x 15 cm. The Picasso Estate.

OPP.22:117; P.III:1246





Bouteille, compotier et verre. Dinard. Late-Summer/1922. Lead pencil & gouache [tempera] on paper [OïC]. [15 x 11,5] 14,5 x 11 cm. Private collection.

OPP.22:118; P.III:1248; PP.22:204; Z.XXX:405

Poissons, bouteille et compotier. Dinard. Late-Summer/1922. Oil on canvas. 81 x 100 cm. The Museum of Modern Art, Gunma.

OPP.22:119; P.III:1249; PP.22:172; Z.IV:409; YB.08*:15



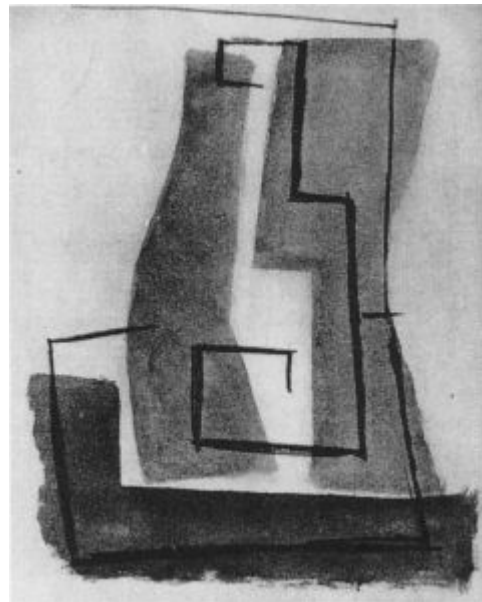


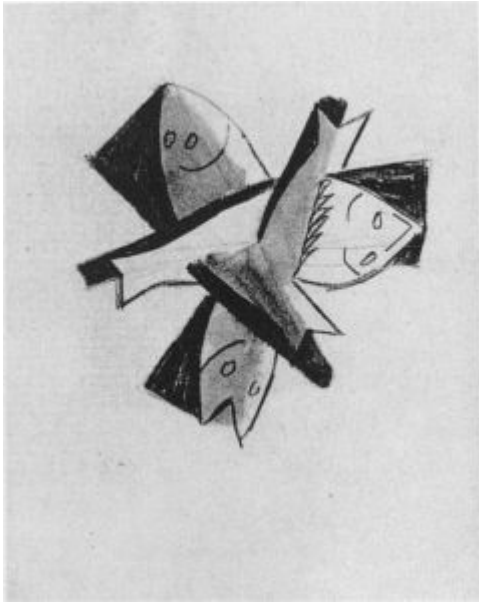
Nature morte au poisson. Dinard. Late-Summer/1922. Oil on canvas. 24 x 35 cm. The Picasso Estate.

OPP.22:120; P.III:1250; LE.07*:12

Bouteille. Dinard. Late-Summer/1922. Lead pencil & gouache [tempera] on paper [Oic]. 14,5 x 11 cm. Private collection.

OPP.22:121; P.III:1251; PP.22:234; Z.XXX:410; GG.86*:74





Trois poissons. Dinard. Late-Summer/1922. Lead pencil & gouache [tempera] on paper [OïC]. [15 x 11,5] 14,5 x 11 cm. Private collection.

OPP.22:122; P.III:1252; PP.22:226; Z.XXX:413

Femme assise, les mains croisées. Dinard. Late-Summer/1922. Oil on canvas. 91 x 61,3 cm. Kunstmuseum Bern. Donation Hilde Thannhauser, 1978, Bern from Justin K. Thannhauser Collection.

OPP.22:123; P.III:1253; PP.22:145; Z.IV:392; CH.10*:131p; HT.34*:117; JC.40:115p; JL.51:69; JR.62*:4.31; KB.01*:76





Nu couché. [Dinard]. [Late-Summer/1922].
Pastel. 22,5 x 34 cm. Galerie Felix Vercel, Paris.

OPP.22:124; P.III:1254; PP.22:105; Z.XXX:377;
UW.88*:48

Femme debout, le bras derrière la tête. Dinard. Late-Summer/1922. Metalpoint on cream wove paper prepared with a white ground. [34 x 23,5] 34,3 x 23,9 cm. The Art Institute of Chicago. (Inv 2015.275). Promised gift of Francey and Dr. Martin L. Gecht.

OPP.22:125; P.III:1255; PP.22:165; Z.XXX:362;
CH.03a*:110; GT.81*:n/a; NY.95a*:35; SD.13a*:74;
TU.86*:103





Femme debout un bras derrière la tête. Dinard. Late-Summer/1922. Lead pencil on paper. 34 x 23,5 cm. The Picasso Estate.

OPP.22:126; P.III:1256; PP.22:167; Z.XXX:364

Nu couché. [Dinard]. [Late-Summer/1922]. Oil on canvas. 17 x 22 cm. The Picasso Estate.

OPP.22:127; P.III:1258; PP.22:106; Z.XXX:378





Mère et enfant. Dinard. [1921~] Late-Summer/1922. Etching. [10 x 14,9] 10,2 x 14,7 cm. Galerie Michael, Beverly Hills, CA. 2005.

OPP.22:128; B.I:49; Ba:66.Bb1; P.III:1259

Mère et fils (Olga et Paulo). Paris. [Late-Summer]/1922. Etching, edition 50. 32,8 x 24,7 cm. Sotheby's. #121, L07160, 03/27/07.

OPP.22:195; B.I:50; Ba:67.B; PA.17b*:105





Femme nue, assise contre une draperie. Paris. Late-Summer/1922. Oil & gouache on panel. 24 x 19 cm. Dickinson, London/New York. Formerly Sotheby's. #41, N08741, 05/03/11; Sotheby's. #17, N08314, 05/08/07.

OPP.22:196; PP.22:139; Z.IV:395; LA.91*:n/a

Main d'enfant. Dinard. Late-Summer/1922. Pencil on paper. 13,5 x 10,5 cm. Private collection.

OPP.22:201; PP.22:076; Z.XXX:304; GG.86*:75





Mains et jambe d'enfant. Dinard. Late-Summer/1922. Pencil on paper. 13,5 x 10,5 cm. Private collection.

OPP.22:202; PP.22:077; Z.XXX:305; GG.86*:75



Portrait de Paul. Dinard. Late-Summer/1922. Pencil on paper. 13,5 x 10,5 cm. Private collection.

OPP.22:203; PP.22:078; Z.XXX:303; GG.86*:75



Paulo assis. Dinard. Late-Summer/1922. Pencil on paper. 13,5 x 10,5 cm. Private collection.

OPP.22:204; PP.22:080; Z.XXX:296; GG.86*:75

Paulo assis. Dinard. Late-Summer/1922. Pencil on paper. 13,5 x 10,5 cm. Private collection.

OPP.22:205; PP.22:081; Z.XXX:302; GG.86*:75





Paulo assis. Dinard. Late-Summer/1922. Pencil on paper. 13,5 x 10,5 cm. Private collection.

OPP.22:206; PP.22:082; Z.XXX:307; GG.86*:75

Portrait de Paul. Dinard. Late-Summer/1922. Pencil on paper. 13,5 x 10,5 cm. Private collection.

OPP.22:207; PP.22:083; Z.XXX:301; GG.86*:75





Femme et enfant (Olga et Paulo). Dinard. Late-Summer/1922. Pencil on paper. 42 x 30,5 cm. Private collection.

OPP.22:208; PP.22:122; Z.XXX:343; GG.86*:77; WR.96:48p

La coiffure. Dinard. Late-Summer/1922. Pencil on paper. 42 x 30,5 cm. Private collection.

OPP.22:209; PP.22:124; Z.XXX:350; GG.86*:77





La coiffure. Dinard. Late-Summer/1922. Oil on canvas. [18 x 16] 18,3 x 16,2 cm. Christie's. #29, 5590, 12/01/2008. Formerly Marie-Blanche Lanvin, Comtesse Jean de Polignac Collection.

OPP.22:210; PP.22:125; Z.IV:387

La coiffure. Dinard. Late-Summer/1922. Oil on canvas [Oic]. 22 x 16 cm. Mr. Paul Hyde Bonner Collection, Summerville, SC.

OPP.22:211; PP.22:126; Z.IV:385; JR.62*:4.24; UP.00:514





Quatre poissons. Dinard. Late-Summer/1922. Oil on canvas. 21,9 x 26,7 cm. Christie's. #0475, 1901, 11/07/07.

OPP.22:212; PP.22:228; Z.IV:410; BA.18*:28p; JR.62*:3.31

Pomme, verre, paquet de tabac. Dinard. Late-Summer/1922. Oil on canvas. 19 x 23,8 [24] cm. Christie's. #0024, 5485, 12/03/07. Formerly Paul and Marguerite Rosenberg Collection.

OPP.22:213; PP.22:184; Z.IV:415; JR.62*:3.30





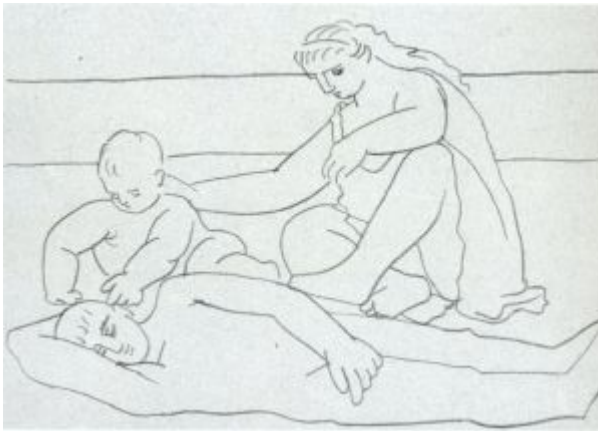
Femme nue assise. Paris. [Late-Summer]/1922. Oil on panel. 46 x 32,4 [33] cm. Sotheby's. #36, LN7384, 06/24/97.

OPP.22:214; PP.22:140; Z.IV:394

Femme nue debout. Dinard. [Late-Summer]/1922. Pencil on paper. 26,9 x 20,9 cm. Christie's. #5, 5517, 05/21/08.

OPP.22:217



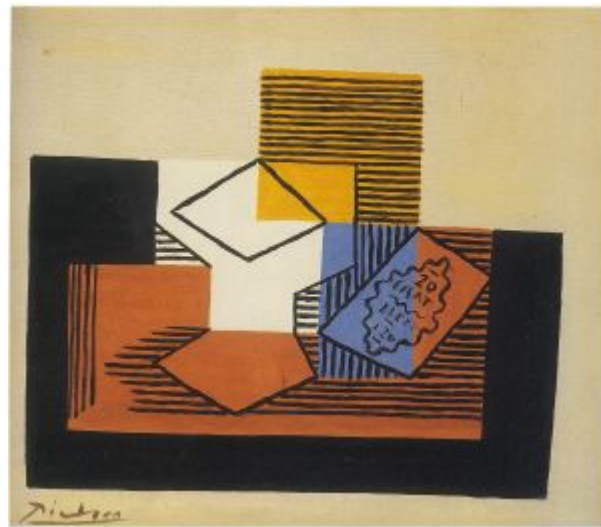


Famille au bord de la mer. Dinard. Late-Summer/1922. Pencil on paper. 10,5 x 13,5 cm. Private collection.

OPP.22:228; PP.22:090; GC.96:181p; GG.86*:75

Comptoir et paquet de cigarettes. Dinard. [Late-Summer]/1922. Oil on canvas. 32 x 36 cm. Private collection, Switzerland.

OPP.22:238; PP.22:185; Z.VI:1428; CH.10*:144p; KB.01*:75





Verre et compotier. Dinard. [Late-Summer]/1922. Oil on canvas. 38 x 46 cm. Národní Galerie, Prague. (Inv O 3219). Purchased, 1923.

OPP.22:239; PP.22:176; Z.IV:408; JP.60:28; PS.05:41

Poire, verre et citron. Dinard. Late-Summer/1922. Oil on canvas. 22 x 27 cm. Fundación María José Jove Collection. Formerly Helly Nahmad Collection, Monaco/London.

OPP.22:240; PP.22:178; Z.IV:414; JR.62*:3.29; LO.98b*:n/a; LW.15*:93p; MA.22a*:43; RT.99*:18





Compotier, bouteille et paquet de tabac. Paris. [Late-Summer]/1922. Oil on canvas. [35,5 x 46,5] 35,7 x 47 cm. Sotheby's. #336, L17004, 03/02/17. Formerly Helly Nahmad Collection, Monaco/London.

OPP.22:241; PP.22:044; Z.VI:1433; LO.98b*:14; RP.60*:102; RT.99*:19

Verre, journal, paquet de tabac. Dinard. [Late-Summer]/1922. Oil on canvas. 19 x 24 cm. Christie's. #17, 5990, 07/01/98.

OPP.22:243; PP.22:181; Z.IV:416; CH.61b*:96; WA.64*:n/a; WC.62*:n/a





Citron et verre. Dinard. [Late-Summer]/1922. Oil on canvas. 33 x 41,2 cm. Christie's. #2, 15469, 02/27/18.

OPP.22:252; PP.22:177; Z.IV:420; BU.75b*:270; JC.40:116p; NY.23e*:n/a

Table devant une fenêtre. Dinard. [Late-Summer]/1922. Watercolor & pencil on laid paper. 14,1 x 11 cm. The Solomon R. Guggenheim Museum, NYC. (Inv 78.2514.T51). Thannhauser Collection.

OPP.22:253; PP.22:205; Z.IV:432; JC.40:116p; NY.52c*:22; TC.92:86p



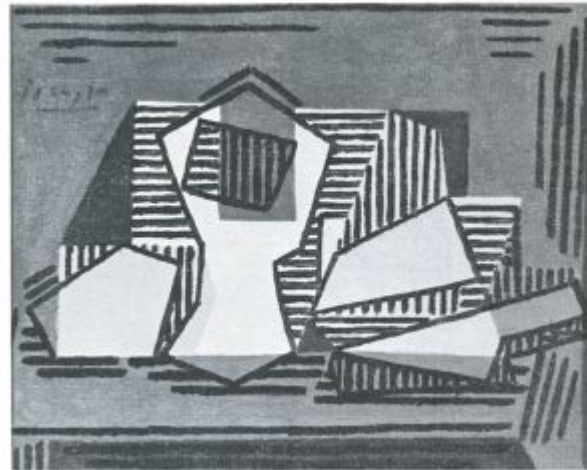


Buste de femme. Dinard. [Late-Summer]/1922. Oil on canvas. 61,2 x 50 cm. Cincinnati Art Museum. (Inv 1941.253). Fanny Bryce Lehmer Endowment.

OPP.22:257; PP.22:143; Z.IV:393

Nature morte: pain, verre, camembert , couteau. Dinard. [Late-Summer]/1922. Oil on canvas [OiC]. 22,2 x 27,3 cm. Mr. and Mrs. Leigh B. Block Collection, Chicago.

OPP.22:258; PP.22:182; Z.IV:399;
CH.68a*:27





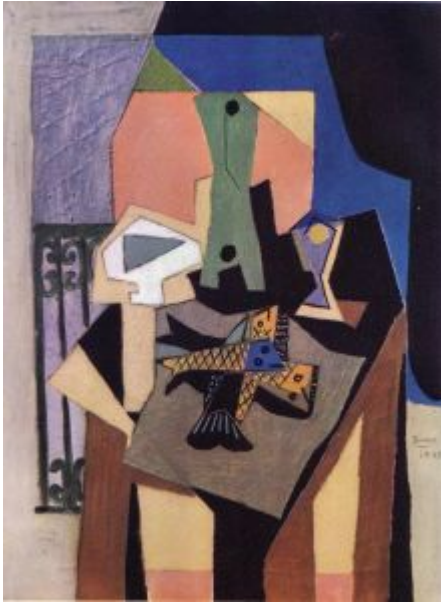
Guitare, bouteille et compotier (Nature morte). Dinard.
Late-Summer/1922. Oil on canvas. 122,5 x 97,5 cm.
Christie's. #9, 16419, 10/17/18. Formerly Marina Picasso
Collection. (Inv 12307).

OPP.22:260; PP.22:042; Z.XXX:279; CG.08*:119p;
GE.86a*:184; KB.99*:9; KB.99*:9; MB.84*:74; MP.81*:132;
MP.83*:102; PL.96*:54; PU.94*:21; TK.90b*:10; TO.14*:18;
VE.81*:176

La porte de la maison et le jardin. Dinard. [Late-Summer]/1922. Graphite pencil on paper. [13,5 x 10,5] 14 x 11 cm. Private collection.

OPP.22:389; PP.22:060; Z.XXX:309





Poissons, bouteille et verre sur une table. Dinard~Paris.
Late-Summer/1922~Winter/1922~1923. Oil on canvas. 130 x 97
cm. Mr. and Mrs. Albert D. Lasker Collection, NY.

OPP.22:147; FM:966; P.III:1281; PP.22:230; Z.IV:448;
GD.77:36p; GP.32*:125; JC.59:62p; JR.62*:3.33; KZ.32*:120;
MJ.55*:58; NY.53f*:35; NY.55f*:4

**Carte postale adressée à Henri-Pierre
Roché.** Dinard. 27-July/1922. Ink on
postcard. 8,9 x 14 cm. Christie's. #36,
2576, 08/28-29/12.

OPP.22:242





Le fils de l'artiste (Paulo). Paris. September/1922. Oil & sepia was on canvas. 32,5 x 24 cm. Private collection.

OPP.22:143; P.III:1277; PP.22:238; Z.IV:437; JR.14*:138p; KZ.32*:115

Le fils de l'artiste. Paris. Fall/1922. Oil on canvas. 35 x 31 cm. Marina Picasso Collection. (Inv 12309). Courtesy Galerie Jan Krugier, Geneva.

OPP.22:129; P.III:1262; PP.22:236; Z.IV:435; GP.32*:n/a; JL.71:236p; KZ.32*:114; MG.13*:57p





L'atelier rue de La Boétie. Paris. Fall/1922. India ink on paper. [24,3] 24,5 x 32 cm. The Picasso Estate.

OPP.22:130; P.III:1263; PP.22:242; Z.XXX:365; MF.10*:120p

Nature morte à la bouteille de vin et aux raisins. Paris. [Autumn/1922].
Pochoir in colors, edition 100 [After *Nature morte à la bouteille de vin et aux raisins*].
49 x 58 cm. Musée Picasso, Paris. Also Artcurial. #21, 06/27/05.

OPP.22:148; MPP:3516





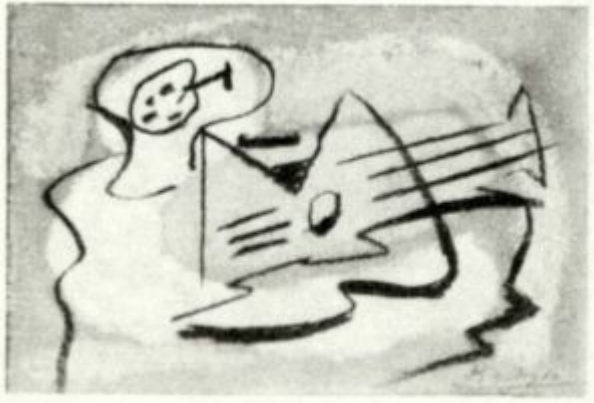
Portrait d'enfant à la tairne (Paulo). Paris. Fall/1922. Oil on panel [canvas]. 46 x 33 cm. Private collection.

OPP.22:215; PP.22:237; Z.IV:436; JC.98*:176; KZ.32*:116; WS.95a*:72



Guitare et compotier devant une fenêtre. Paris. Fall/1922. Charcoal & pastel on paper. 12,5 x 16,5 cm. Museo Picasso, Málaga. On temporary loan from Fundación Almine & Bernard Ruiz-Picasso para el Arte.

OPP.22:408; DP.20*:48



Guitare et compotier. Paris. [Fall]/1922. Pastel [OiC]. 13 x 18 cm. Private collection.

OPP.22:279; PP.22:240; Z.IV:445

Guitare sur un guéridon. Paris. 25-September/1922. Watercolor on paper. 16,2 x 10,5 cm. Private collection.

OPP.22:145; P.III:1279; PP.22:270; Z.IV:431





Deux femmes et un enfant. Paris. [Winter] 4th-Quarter/1922. Oil on canvas. [186 x 125] 189 x 129,2 cm. Christie's. #42, 2844, 05/06/14. Formerly Justin K. Thannhauser Collection.

OPP.22:131; P.III:1265; PP.22:281; Z.IV:442; NK.54*:17; PI.74*:59; RO.17:92p

Guitare. Paris. 4th-Quarter/1922. Charcoal & oil on canvas. 54 x 65 cm. The Picasso Estate.

OPP.22:132; P.III:1266



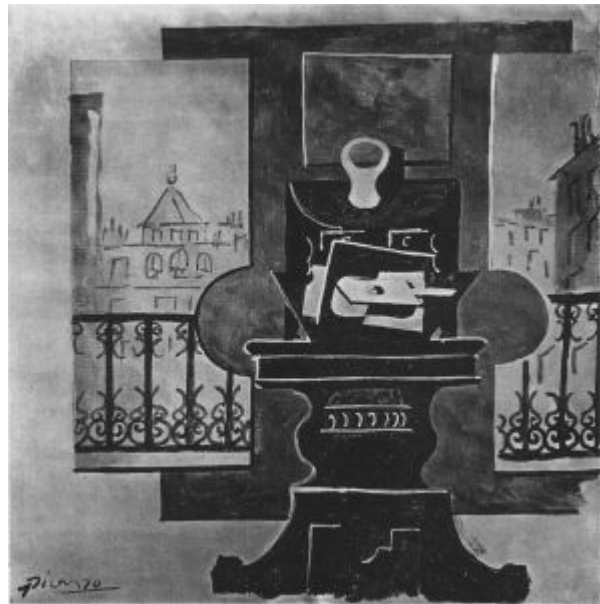


Verre, guitare et partition. Paris. 4th-Quarter/1922. Oil & sand on canvas. 50 x 81 cm. The Frances Lehman Loeb Art Center. Vassar College. (Inv 2005.11). Gift of Virginia Herrick Deknatel, class of 1929, in honor of Frances Daly Fergusson, President of Vassar College 1986-2006.

OPP.22:134; P.III:1268; PP.22:278; Z.IV:439; UE.08*:16

Les fenêtres. Paris. 4th-Quarter/1922. [Gouache] tempera on paper [Oic]. 23 x 22 cm. Private collection.

OPP.22:141; P.III:1275; PP.22:239; Z.IV:444; BS.55:96





Guitare sur un tapis rouge. [Paris]. 4th-Quarter/1922. Oil on canvas. [81 x 116] 87 x 116,5 cm. David and Ezra Nahmad Collection. Formerly Helly Nahmad Collection, Monaco/London; Christie's. #40, 6882, 02/02/04; Paul Willert Collection.

OPP.22:030; P.III:1269; PP.22:277; Z.IV:440; AB.39a*:166; AB.46:126p; HN.13*:93p; LO.70d*:120; MA.22a*:38; NY.42e*:n/a; NY.83d*:12; RP.60*:99

Cirque forain. Paris. [Fall] December/1922. Gouache & graphite on paper. 11 x 14,5 cm. Musée Picasso, Paris. Dation 1979.

OPP.22:012; MPP:981; P.III:1288; PP.22:249; DO.07*:174; GG.87:84p; JC.98*:191; MA.08a*:n/a; ME.82a*:40; PA.04d*:n/a; PA.17b*:104; PA.79a*:495; PD.06*:65p; TL.95:16p; TY.03*:n/a; UP.00:517; WS.95a*:67





Acrobate au repos. Paris. December/1922. Ink & pencil on paper. 16,4 x 11,4 cm. Musée Picasso, Paris. Dation 1979.

OPP.22:027; MPP:978; PP.22:247; DO.07*:171; JC.98*:188; PA.17b*:99; TL.95*:5; TY.03*:n/a

Acrobate à cheval. Paris. December/1922. Ink on pencil outlines. 18,5 x 11,2 cm. Musée Picasso, Paris. Dation 1979.

OPP.22:035; MPP:977; P.III:1290; PP.22:246; DO.07*:172; JC.98*:189; PA.17b*:98; TL.95*:4; TY.03*:n/a





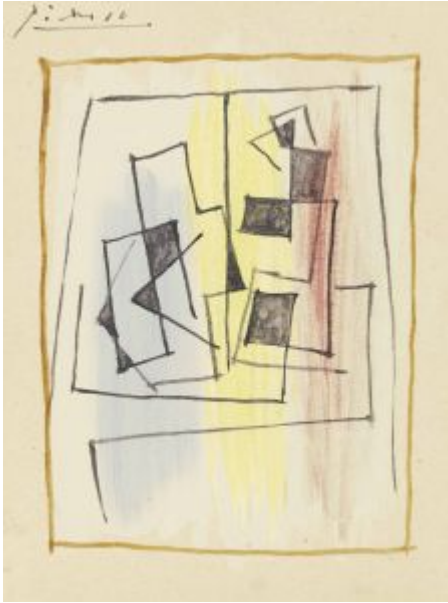
Cirque forain. Paris. December/1922. Ink & graphite on paper. 11,2 x 14,3 cm. Musée Picasso, Paris. Dation 1979.

OPP.22:152; MPP:980; P.III:1286; PP.22:248;
JC.98*:190; ME.82a*:39; PA.17b*:103;
PA.79a*:494; TL.95*:2

Acrobate le pied sur son tambour. Paris. December/1922. Ink over pencil traces on paper. 16,4 x 11,5 cm. Musée Picasso, Paris. Dation 1979.

OPP.22:220; MPP:976; PP.22:245; DO.07*:170;
PA.17b*:100





Nature morte sur une table carrée. Paris. December/1922.
Gouache & pen & brush & black ink on paper. 13,9 x 10,5 cm.
Christie's. #140A, 15972, 05/16/18.

OPP.22:266; PP.22:244; Z.XXX:411

Guitare et compotier. Paris. December/1922.
Gouache [OïC]. 14 x 10,5 cm. Private collection.

OPP.22:376; PP.22:262; Z.XXX:418





Guitare et compotier. Paris. December/1922. Gouache [OIC].
13,5 x 10,5 cm. Private collection.

OPP.22:377; PP.22:263; Z.XXX:419

Guitare sur une table. Paris. December/1922. Gouache
[OIC]. 11,5 x 7,5 cm. Private collection.

OPP.22:382; PP.22:264; Z.XXX:424





Saltimbanque assis. Paris. [Winter/1922~1923] End/1922. India ink on paper. 16 x 10 cm. Private collection.

OPP.22:135; P.III:1295; PP.22:251; Z.V:4; FS.82:37p

Mandoline sur une table. Paris. [Early] End/1922. Oil on canvas. [81 x 100] [81,6 x 100,1] 82,2 x 100,4 cm. Christie's. #23A, 15977, 11/11/18. Formerly Christie's. #13, 2045, 11/06/08. Mr. & Mrs. William B. Jaffe Collection, NY; Walter P. Chrysler, Jr. Collection, NY.

OPP.22:139; P.III:1273; PP.22:019; Z.IV:422; AB.57*:58p; CH.37a*:29; DL.67*:36; DT.37*:10; GP.32*:123; JC.40:117p; JR.62*:3.28; KZ.32*:118; LO.31*:20; NY.31b*:5; NY.31g*:5; NY.39f*:n/a; PH.58*:103; RI.41*:177





Saltimbanque. Paris. End/1922. Pen & brush & ink on paper. [29 x 22] 29,9 by 22,9 cm. Sotheby's. #106, N09431, 11/05/15. Formerly Adolph Alfred Taubman Collection; Sotheby's. #6, L15002, 02/03/15.

OPP.22:144; P.III:1296; PP.22:252; Z.V:5

Femme dans un fauteuil (Olga). Paris. End/1922. Oil on canvas. 100 x 81 cm. Private collection.

OPP.22:146; P.III:1280; PP.22:286; Z.IV:449





Saltimbanque accoudé sur une chaise. Paris. End/1922. Pen & brush & brown ink, brown wash on paper. 29,2 x 24,7 cm. David Lachenmann Collection, Zürich.

OPP.22:156; P.III:1297; PP.22:256; Z.V:10; NY.21g*:37; PH.16b*:56; RO.17*:139

Jeune homme au miroir, nu, joueur de flûte de pan, enfant. Paris. [End]/1922. Pastel & charcoal on tinted paper. 22,5 x 19,9 cm. Alon Zakaim Fine Art, London. Formerly Christie's. #33, 4038, 10/22-23/15.

OPP.22:262; TK.78b*:1076; VB.77*:59p





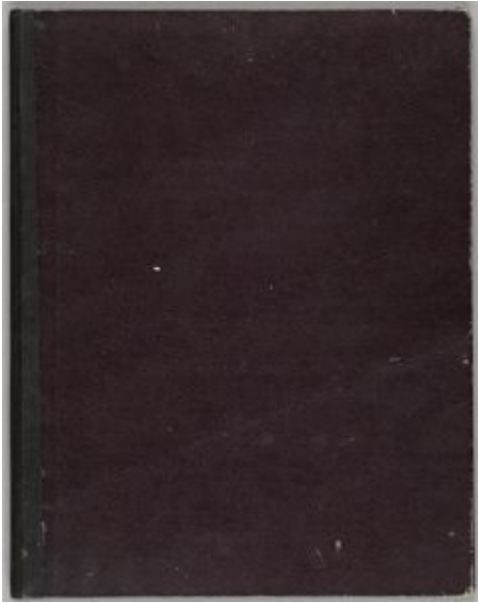
Couverture. Paris. [End]/1922. Mixed media. 29,5 x 23,2 cm. Musée Picasso, Paris. Dation 1979. Sketchbook 19.

OPP.22:263; MPP:1868.c2; BL.96:24.c2

1ère de couverture. Paris. [End]/1922. Mixed media. 29,5 x 23,2 cm. Musée Picasso, Paris. Dation 1979. Sketchbook 19.

OPP.22:387; MPP:1868.c1





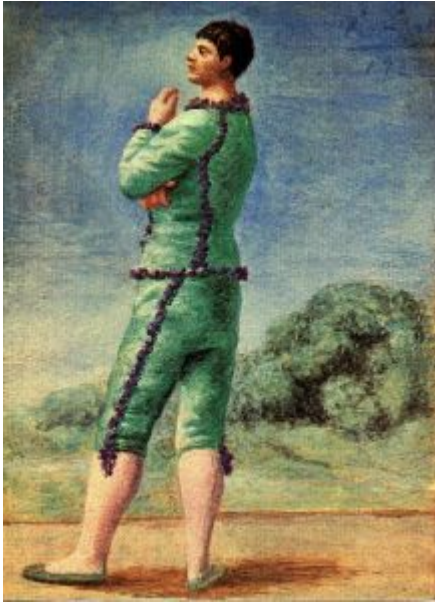
4ème de couverture. Paris. [End]/1922. Mixed media. 29,5 x 23,2 cm. Musée Picasso, Paris. Dation 1979. Sketchbook 19.

OPP.22:388; MPP:1868.c4

Femme assise dans un fauteuil. Paris.
Winter/1922~1923. Oil on canvas. 81 x 65 cm.
Toyama Prefectural Museum of Art & Design. Formerly
Private collection, Los Angeles; Beyeler Galerie,
Riehen/Basel.

OPP.22:010; P.III:1292; PP.22:279; Z.IV:450;
WW.91:288p





Acrobate en vert. Paris. Winter/1922~1923. Gouache & color pencil on paper. 16,1 x 11,4 cm. Private collection.

OPP.22:011; PP.22:261

Buste de femme. Paris. [Winter]/1922.
Oil on canvas [OïC]. 19,2 x 20,5 cm.
Private collection.

OPP.22:019; PP.22:287; Z.VI:1423





Olga et Paulo. Paris. Winter/1922~1923. Lead pencil on paper. 11,5 x 8,4 [8,5] cm. Musée Picasso, Paris. Dation 1979.

OPP.22:032; MPP:1007; P.III:1305; PP.22:285; RK.01*:n/a

Nu assis. Paris. [Winter]/1922~1923. Oil & pencil on canvas. 130 x 97 cm. The Abelló Collection. Formerly Galerie Beyeler, Basel.

OPP.22:033; P.III:1282; P.IV:327; PP.22:280; Z.IV:454; CG.12*:17; GP.96:143p; JC.98*:219; MA.22a*:115; TL.95*:1; UP.00:521





Saltimbanque assis. Paris. Winter/1922~1923. Brush, India ink & red chalk on paper. 29 x 22 cm. Private collection. Courtesy Martin Schwander, Art Advisory & Curatorial Services, Basel.

OPP.22:045; P.III:1300; PP.22:253; Z.V:8; AH.13*:50; KB.01*:85; RD.00*:93

Guitare sur une table. Paris. Winter/1922~1923. Oil on wood panel. 15 x 9,9 cm. Musée Picasso, Paris. Dation 1979.

OPP.22:137; MPP:76; P.III:1271; PP.22:021; MP.85:72; PA.79a*:122





La couronne de fleurs. Paris. Winter/1922~1923. Oil on canvas [OIC]. 130 x 97 cm. Private collection.

OPP.22:138; P.III:1272; PP.22:282; Z.IV:443

Femme et enfant. Paris. Winter/1922~1923. Oil on canvas [OIC]. 130 x 97 cm. Private collection. Formerly The Chrysler Museum, Norfolk, VA. Walter P. Chrysler, Jr. Collection, NY.

OPP.22:140; P.III:1274; PP.22:283; Z.IV:455;
AB.30*:74; BO.38*:18; BS.55:390p; CC.62:161p;
CH.37a*:9; CH.40a*:42; CL.36*:336; DT.37*:9;
DY.60*:115; FP.73:268p; GP.32*:136; HT.34*:45;
JC.40:127p; KZ.32*:128; NO.35*:n/a; NY.36i*:12;
NY.36k*:n/a; NY.37a*:14/17; NY.39h*:42A; PH.35*:n/a;
RI.41*:178; RP.60*:103; SF.39a*:Y-201





Comptoir, bouteille et guitare. Paris. Winter/1922~1923. Oil on canvas. [131 x 97] 130 x 96,5 cm. Private collection, London. Formerly Douglas Cooper Collection.

OPP.22:142; P.III:1276; PP.22:290; Z.IV:441; FE.57:12; GP.32*:135; JR.07:n/a; KZ.32*:127

La coiffure. Paris. Winter/1922~1923. [Tempera] Gouache & turpentine on wood. 10,5 x 8 cm. The Picasso Estate.

OPP.22:150; P.III:1284; UP.00:513





Mère et enfant. Paris. Winter/1922~1923. [Tempera] Gouache & turpentine on wood. 15 x 10 cm. The Picasso Estate.

OPP.22:151; P.III:1285; HT.34*:43; KZ.32*:136

Saltimbanque en costume rouge. Paris. Winter/1922~1923. Watercolor on paper. [29 x 22] 32 x 24 cm. Private collection.

OPP.22:157; P.III:1293; PP.22:254; Z.V:7





Monument avec horloge à Paris. Paris.
[Winter]/1922~1923 [Early]/1923. India Ink & pastel [red crayon] on paper glued on cardboard. [12,5 x 20,5] 12 x 21 cm. Christie's. #262, 11790, 02/03/16. Formerly Christie's. #179, 1533, 06/25/14; Sotheby's. #217, PF8008, 07/03/08; Sotheby's. #61, PF7026, 07/03/07.

OPP.22:198

Femme et enfant. Paris.
[Winter]/1922~1923. Sanguine [Oic]. 24 x 31,5 cm. Private collection.

OPP.22:281; PP.23:020; Z.IV:451





Enfant. Paris. [Winter]/1922~1923. Charcoal. 64 x 49 cm.
Private collection.

OPP.22:282; PP.22:284; Z.IV:453

Saltimbanque accoudé. Paris. Winter/1922~1923.
Sepia. 29 x 22 cm. Private collection.

OPP.22:283; PP.22:255; Z.V:6





Femme de profil. Paris. [Winter]/1922~1923. Essence. 105 x 60 cm. Private collection.

OPP.22:349; PP.22:276; Z.XXX:379

Acrobate. Paris. 22-December/1922. Gouache on paper. 16,4 x 10,3 cm. Musée Picasso, Paris. Dation 1979.

OPP.22:154; MPP:979; P.III:1289; PP.22:260; DO.07*:169; JC.98*:187; PA.17b*:97; TL.95*:3; TY.03*:n/a





Guitare sur une table. Paris. 24-December/1922. Gouache on Galerie Bernheim-Jeune invitation card. 16,1 x 12,5 cm. Sotheby's. #157, L03003, 02/05/03. Formerly Dora Maar Collection.

OPP.22:028; P.III:1278; PP.22:267; Z.IV:433; PA.98d*:4

Nature morte sur une table ronde. Paris. 24-December/1922. Watercolor & gouache on laid paper. 16,3 x 10,3 cm. The Solomon R. Guggenheim Museum, NYC. (Inv 78.2514.52). Thannhauser Collection.

OPP.22:255; PP.22:269; Z.XXX:425; TC.92:87p



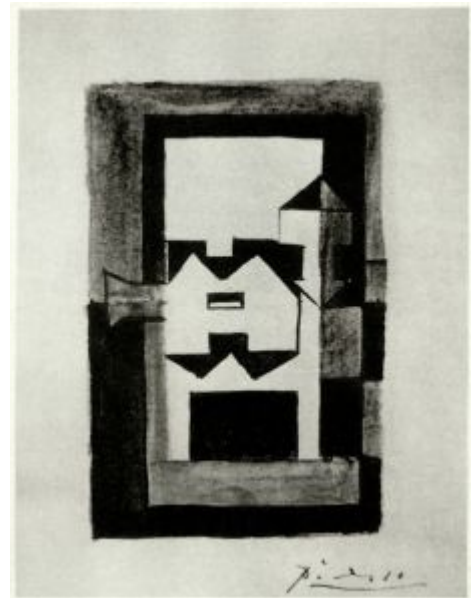


Guitare et compotier sur une table carrée. Paris. 24-December/1924. Gouache & ink on invitation card of The Galerie Berhneim Jeune. [16 x 12] 16 x 11,8 cm. Artcurial. #269, 4346, 06/08/23.

OPP.22:378; PP.22:265; Z.XXX:420

Guitare et compotier sur une table carrée. Paris. 24-December/1924. Gouache [OïC]. 13 x 10 cm. Private collection.

OPP.22:379; PP.22:266; Z.XXX:421





Guitare et bouteille sur un guéridon. Paris. 24-December/1922.
Gouache [OIC]. 16,3 x 10,4 cm. Private collection.

OPP.22:385; PP.22:268; Z.XXX:428

Saltimbanque accoudé. Paris. 26-December/1922.
Watercolor & brush & ink on paper. 16,5 x 10,5 cm. Sotheby's.
#101, N11157, 05/16/23.

OPP.22:046; P.III:1301; PP.22:259; Z.V:11; DC.87:305





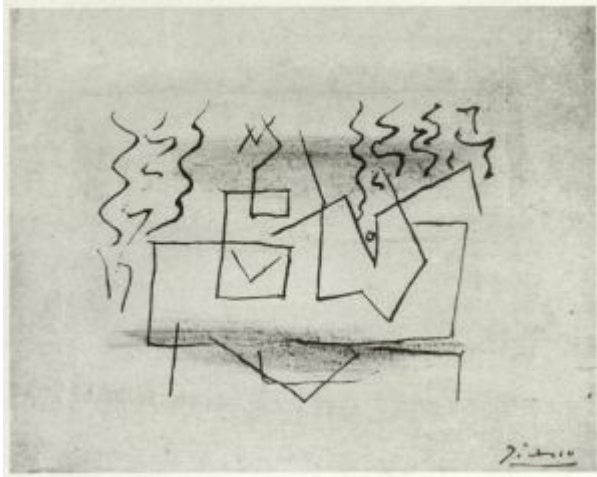
Portrait d'un enfant en Pierrot. Paris. 27-December/1922. Gouache & watercolor on laid paper. 11,8 x 10,5 cm. Musée Picasso, Paris. Dation 1979.

OPP.22:153; MPP:982; P.III:1287; PP.22:271; BD.16*:41; DO.07*:168; JC.98*:177; PA.04d*:n/a; PA.17b*:107; PA.79a*:496; TY.03*:n/a; UP.00:516; VR.16*:n/a; WS.94:51p; WS.95a*:68

Guitare et compotier sur un guéridon. Paris. 28-December1922. Gouache [OïC]. 16 x 10,5 cm. Private collection.

OPP.22:383; PP.22:272; Z.XXX:426





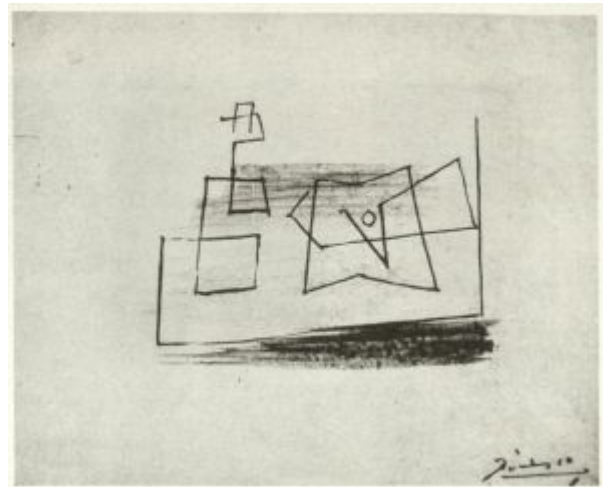
Bouteille et guitare sur une table carrée.

Paris. 30-December/1922. Gouache [OïC]. 12,5 x 15,5 cm. Private collection.

OPP.22:380; PP.22:274; Z.XXX:422

Bouteille et guitare sur une table carrée. Paris. 30-December/1922. Gouache [OïC]. 12,5 x 15,5 cm. Private collection.

OPP.22:381; PP.22:275; Z.XXX:423





Verre. Paris. 30-December/1922. Gouache on paper. 14 x 9,5 cm. Sotheby's. \$35, L22005, 05/04/22. Formerly Pierre Le Guennec Collection, France.

OPP.22:397

Homme assis. Paris. 31-December/1922. Watercolor on paper. 23,8 x 17,6 cm. Sotheby's. #227, L22004, 03/03/22. Formerly Pierre Le Guennec Collection, France.

OPP.22:026



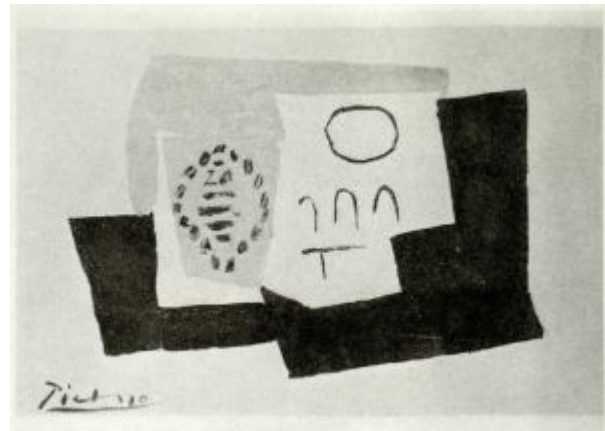


Guitare, bouteille et compotier. Paris. 31-December/1922. Gouache [OïC]. 12,5 x 16,5 cm. Private collection.

OPP.22:280; PP.22:289; Z.IV:447

Nature morte au paquet de cigarettes. Paris. 31-December/1922. Gouache [OïC]. [19,2 x 29,5] 9 x 10 cm. Private collection.

OPP.22:286; PP.21:091; Z.VI:1424





Guitare, verre et compotier sur une table ronde. Paris. 31-December/1922. Gouache [OIC]. 9 x 14 cm. Private collection.

OPP.22:384; PP.22:288; Z.XXX:427

Nature morte. Paris. 31-December/1922. Watercolor on paper. 12,1 x 16,4 cm. Christie's. 2021.

OPP.22:390





Portrait de Albert Clinton 'Bertie' Landsberg. Paris. 1922.
Graphite on paper. 32 x 24 cm. Fitzwilliam Museum,
Cambridge.

OPP.22:013

**Olga Picasso dans le salon de
l'appartement du 23, rue La Boétie.**
Paris. 1922. Gelatin silver print. 6,5 x 11
cm. Fundación Almine & Bernard Ruiz-
Picasso para el Arte.

OPP.22:025; PA.17b*:274





Femme au miroir. Paris. 1922. Drypoint printed in black ink on antique laid paper. 29,5 x 18,4 cm. Private collection.

OPP.22:060

Portrait de Léon Bakst. Paris. [1922]. Lithograph [After *Portrait de Léon Bakst*]. 39,5 x 29 cm. Christie's. #101, 7551, 11/27/08.

OPP.22:149





Nature morte à la guitare. Paris. 1922. Pastel & black crayon on paper. [11 x 16,2] 11 x 16 cm. Sotheby's. #440, N11105, 11/15/22. Formerly Christie's. #130, 1724, 11/09/06.

OPP.22:155; IM.18*:17

Bouquet dans un verre. Paris. 1922. Oil on canvas. 25,7 x 14,6 cm. Christie's. #0376, 1832, 05/10/07. Formerly Maya Widmaier Picasso Collection, Paris.

OPP.22:197; LO.83d*:n/a; LO.87a*:23





Costume pour Le Bal des Jeux du Comte Étienne de Beaumont. Paris. 1922. Ink. S/U. H. de Beaumont Collection.

OPP.22:216; KS.89:211

La guitare. Paris. [1922]. Oil on canvas. S/U. Norton Gallery and School of Art, West Palm Beach, FL. (Inv 86.6). Gift of Mrs. Gertrude Schweitzer.

OPP.22:219





Cheval et taureau. Paris. [1922]. India ink on paper. 14 x 24 cm. Musée Picasso, Paris. Dation 1979.

OPP.22:222; MPP:994.r; PP.21:320; BF.14:74p

Taureau étripant un cheval. Paris. [1922]. India ink on paper. 24 x 31,6 cm. Musée Picasso, Paris. Dation 1979.

OPP.22:223; MPP:995.v; JC.01b*:12; PD.06*:n/a





Picador et taureau. Paris. [1922]. India ink on paper. 24 x 31,6 cm. Musée Picasso, Paris. Dation 1979.

OPP.22:224; MPP:995.r; PD.06*:n/a

Graffitis. Paris. [1922]. India ink on paper. 14 x 24 cm. Musée Picasso, Paris. Dation 1979.

OPP.22:225; MPP:994.v; PP.21:321





Main. Paris. 1922. Oil on canvas. S/U. The Picasso Estate. Formerly Pierre Le Guennec Collection, France.

OPP.22:227

Illustrations (Pierre Reverdy, Cravates de Chanvre). Paris. 1922. Watercolor. 23,5 x 16,7 cm. Private collection. Formerly Coco-Chanel Collection.

OPP.22:229; WO.92*:157



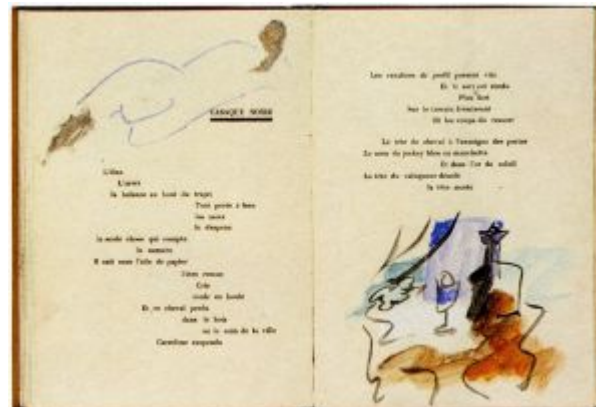


Illustrations (Pierre Reverdy, Cravates de Chanvre). Paris. 1922. Watercolor. 23,5 x 16,7 cm. Private collection.

OPP.22:230; WO.92*:157

Illustrations (Pierre Reverdy, Cravates de Chanvre). Paris. 1922. Watercolor. 23,5 x 16,7 cm. Private collection.

OPP.22:231; WO.92*:157



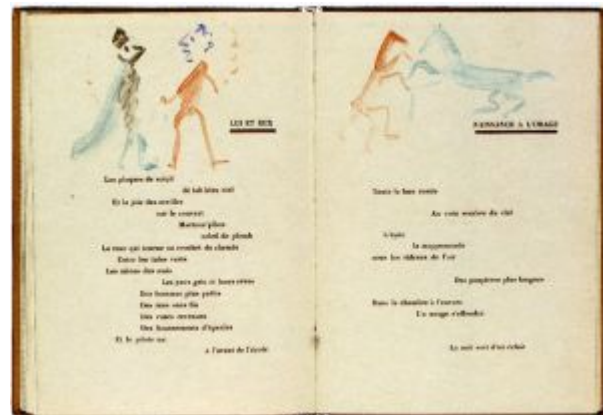


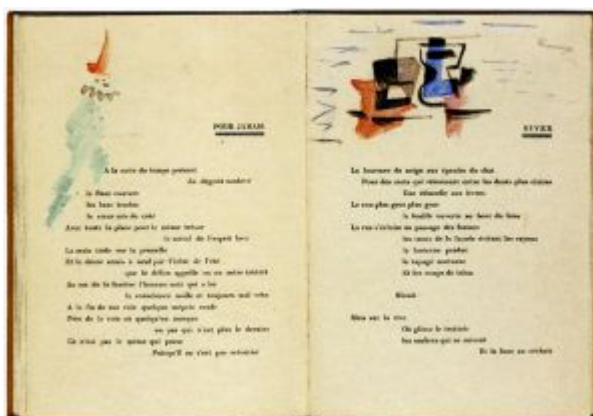
Illustrations (Pierre Reverdy, Cravates de Chanvre). Paris. 1922. Watercolor. 23,5 x 16,7 cm. Private collection.

OPP.22:232; WO.92*:157

Illustrations (Pierre Reverdy, Cravates de Chanvre). Paris. 1922. Watercolor. 23,5 x 16,7 cm. Private collection.

OPP.22:233; WO.92*:157



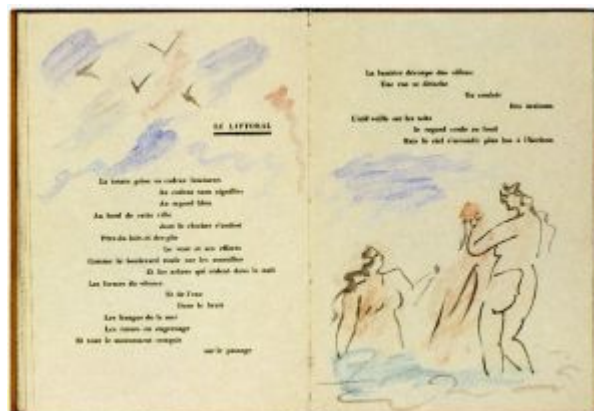


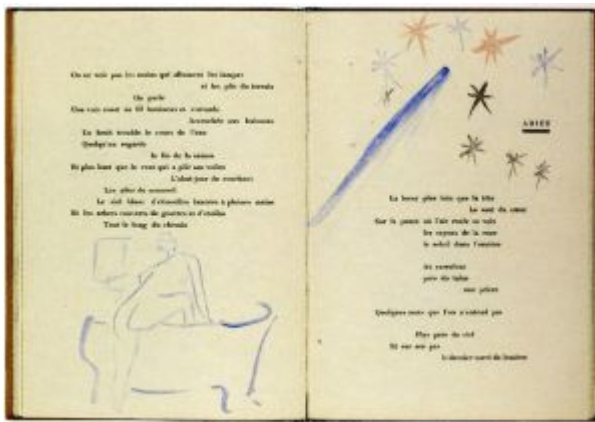
Illustrations (Pierre Reverdy, Cravates de Chanvre). Paris. 1922. Watercolor. 23,5 x 16,7 cm. Private collection.

OPP.22:234; WO.92*:157

Illustrations (Pierre Reverdy, Cravates de Chanvre). Paris. 1922. Watercolor. 23,5 x 16,7 cm. Private collection.

OPP.22:236; WO.92*:157





Illustrations (Pierre Reverdy, Cravates de Chanvre). Paris. 1922. Watercolor. 23,5 x 16,7 cm. Private collection.

OPP.22:237; WO.92*:157

Nature morte. Paris. 1922. Pastel on paper. 12 x 16 cm. Christie's. #587, 6231, 12/09/99.

OPP.22:244





Femme classique. Paris. 1922. Pencil on paper. 11,5 x 15,5 cm. Private collection.

OPP.22:245; SP.96:13

Femme assise. Paris. 1922. Pencil on paper. 11,5 x 15,5 cm. Private collection.

OPP.22:246; SP.96:14





Arlequin assis. Paris. 1922. Pen & black ink on paper. 28,7 x 21,6 cm. Private collection.

OPP.22:248; BO.00*:18

Mère et enfant. Paris. 1922. Pencil & watercolor on paper [OïC]. 15,5 x 11,5 cm. Private collection.

OPP.22:249; WR.96:48p





Femme et enfant (Olga et Paulo). Paris. 1922. Pencil & watercolor on paper [OïC]. 15,5 x 11,5 cm. Private collection.

OPP.22:250; WR.96:48p

Composition. Paris. [1922]. Gouache on paper. 31,4 x 23,5 cm. Masaveu Collection, Oviedo.

OPP.22:251; FC.00*:44





Guitare et compotier. Paris. 1922. Pastel & pencil on paper. 12 x 15,6 cm. Sotheby's. #177, N08988, 05/08/13.

OPP.22:254; PP.22:241; Z.IV:446; KZ.32*:324

Acrobate à cheval. Paris. 1922. Pencil on paper. 9,5 x 6 cm. Private collection.

OPP.22:261; DO.07*:173



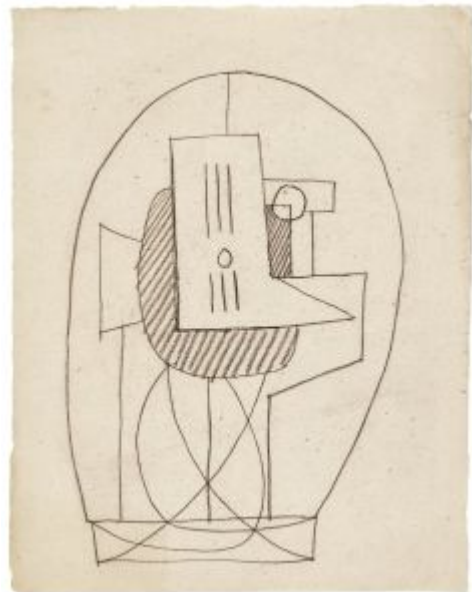


Verre et paquet de tabac. Paris. 1922. Pastel & charcoal on paper. 25,2 x 32,1 cm. Christie's. #181, 15972, 05/16/18.

OPP.22:265

Nature morte sur un guéridon. Paris. 1922. Black crayon on paper. 27 x 21,3 cm. Sotheby's. #327, N10148, 11/13/19. Formerly Marina Picasso Collection.

OPP.22:287; PP.22:191; Z.XXX:382





Nu debout. [Paris]. 1922. Graphite on squared paper. 11,5 x 8,5 cm. Private collection.

OPP.22:344; PP.23:146; Z.XXX:372

Nu debout appuyé sur un fauteuil. [Paris]. 1922. Graphite on paper. 11,5 x 8,5 cm. Private collection.

OPP.22:345; PP.23:147; Z.XXX:373





Portrait de Pierre Masot. Paris. 1922. Pencil on paper. 24,6 x 16 cm. Sotheby's. #14, L20010, 06/18/20. Formerly Marina Picasso Collection.

OPP.22:386

Portrait de Pierre de Massot (Pierre de Massot, Essai de critique théâtrale). Paris. 1922. Reproduction. 24 x 15,8 cm. Bibliothèque Nationale de France, Paris.

OPP.22:391; PA.18e*:64





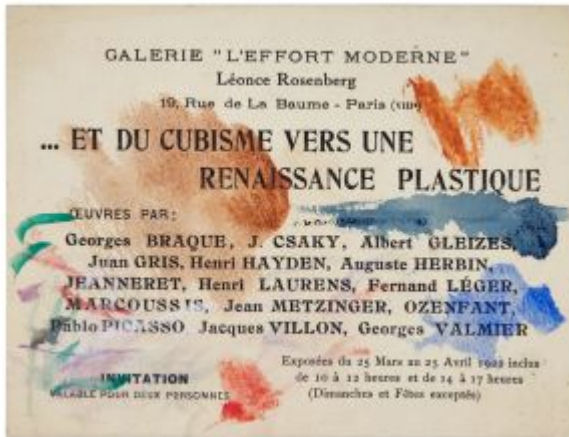
Composition. Paris. 1922. Oil on canvas. 25,5 x 36 cm. Private collection.

OPP.22:392; PA.18e*:91

Personnages. Paris. 1922. Pencil on card [Obverse of *Taches de couleur*]]. 16 x 12,2 cm. Sotheby's. #28, L22005, 05/04/22. Formerly Pierre Le Guennec Collection, France.

OPP.22:395





Taches de couleur. Paris. 1922. Pencil on card [Reverse of *Personnages*]]. 16 x 12,2 cm. Sotheby's. #28, L22005, 05/04/22. Formerly Pierre Le Guennec Collection, France.

OPP.22:396

Projet pour le décor d' *Antigone*. Paris. 1922. Pencil & pastel on paper. 20 x 22,5 cm. Fundación Almine & Bernard Ruiz-Picasso para el Arte.

OPP.22:398; MA.22a*:92





Femme posant. Paris. 1922. Pencil on paper. 34,2 x 23,5 cm.
Fundación Almine & Bernard Ruiz-Picasso para el Arte.

OPP.22:399; MA.22a*:103

Nu féminin assis. Paris. 1920~1922.
Pencil. 50 x 65 cm. Private collection.

OPP.22:404; PP.22:243





Femme drapée. Paris. 1922. Pencil on paper. 33,5 x 22,5 cm.
Private collection.

OPP.22:407; RO.17*:92

Les saltimbanques. Paris. 1922. Etching & aquatint in colors on Arches, edition 222 [After *Deux saltimbanques avec un chien*]. 60 x 42,5 cm. Christie's. #374, 7063, 06/29/05.

OPP.22:038





Couverture. Dinard~Paris~Antibes. 1922~1923. Mixed media. 14 x 22 cm. Musée Picasso, Paris. Sketchbook 1099. Jacqueline Roque Picasso Collection. Dation 1990.

OPP.22:040; MPP:1990.101.c; BL.96:25.c; GR.90*:98

Étude pour Nature morte au guéridon et à la guitare; esquisse d'une chaise à porteurs. Paris. 1922~1923. Graphite on beige paper. 20,6 x 13,9 cm. Musée Picasso, Paris. Jacqueline Roque Picasso Collection, Dation 1990.

OPP.22:425; MPP:1990.101.16r; BL.96:25.16r





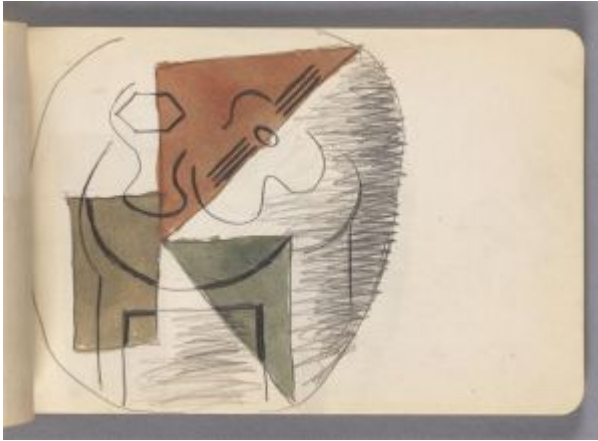
Étude pour Nature morte au guéridon et à la guitare. Paris. 1922~1923. Graphite on beige paper. 20,6 x 13,9 cm. Musée Picasso, Paris. Jacqueline Roque Picasso Collection, Dation 1990.

OPP.22:428; MPP:1990.101.21r; BL.96:25.21r

Projet de décor pour Antigone. Paris. 1922~1923. Graphite on beige paper. 20,6 x 13,9 cm. Musée Picasso, Paris. Jacqueline Roque Picasso Collection, Dation 1990.

OPP.22:453; MPP:1990.101.45r; BL.96:25.45r



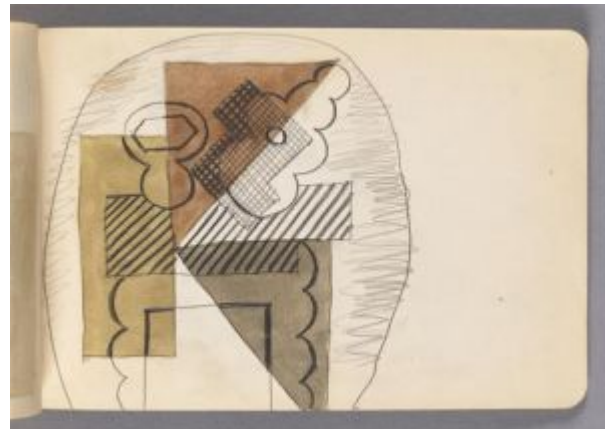


Guitare et compotier sur une table. Paris. 1922~1923. Graphite on beige paper. 20,6 x 13,9 cm. Musée Picasso, Paris. Jacqueline Roque Picasso Collection, Dation 1990.

OPP.22:459; MPP:1990.101.57r; BL.96:25.57r

Guitare et compotier sur une table. Paris. 1922~1923. Graphite & watercolor on beige paper. 20,6 x 13,9 cm. Musée Picasso, Paris. Jacqueline Roque Picasso Collection, Dation 1990.

OPP.22:460; MPP:1990.101.60r; BL.96:25.60r



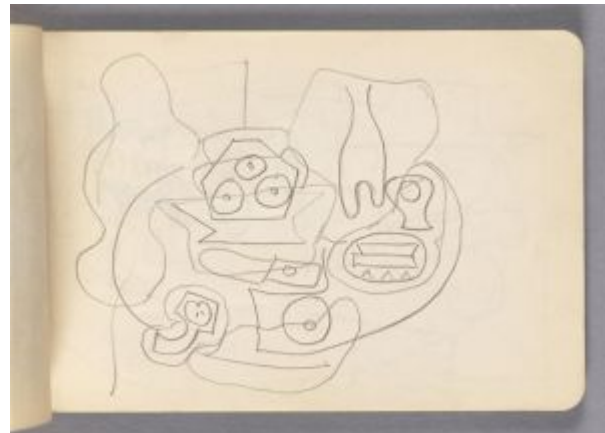


Buste de femme drapée. Paris. 1922~1923.
Graphite on beige paper. 20,6 x 13,9 cm. Musée
Picasso, Paris. Jacqueline Roque Picasso Collection,
Dation 1990.

OPP.22:461; MPP:1990.101.61r; BL.96:25.61r

Nature morte sur une table. Paris.
1922~1923. Graphite on beige paper. 20,6
x 13,9 cm. Musée Picasso, Paris. Jacqueline
Roque Picasso Collection, Dation 1990.

OPP.22:462; MPP:1990.101.62r;
BL.96:25.62r





Guitare et compotier sur un guéridon. Paris. 1922~1923.
Graphite on beige paper. 20,6 x 13,9 cm. Musée Picasso, Paris.
Jacqueline Roque Picasso Collection, Dation 1990.

OPP.22:463; MPP:1990.101.63r; BL.96:25.63r

Esquisses. Paris. 1922~1923. Graphite on beige paper.
20,6 x 13,9 cm. Musée Picasso, Paris. Jacqueline Roque
Picasso Collection, Dation 1990.

OPP.22:464; MPP:1990.101.65r; BL.96:25.65r





2ème de couverture. Paris. 1922~1923. Mixed media. 21, 8 x 13,9 cm. Musée Picasso, Paris. Jacqueline Roque Picasso Collection, Dation 1990.

OPP.22:466; MPP:1990.101.c2; BL.96:25.c2

Guitare; deux études de mère et enfant dans un fauteuil. Paris. 1922~1923. Graphite on paper. 21 x 14 cm. Musée Picasso, Paris. Sketchbook 1099. Jacqueline Roque Picasso Collection. Dation 1990.

OPP.22:024; MPP:1990.101.64r; PP.22:294; BL.96:25.64r; GR.90*:98; JB.92:31p





La flûte de Pan: tête d'homme (Étude). Paris. 1922~1923.
Black ink & ink wash. 14 x 22 cm. Musée Picasso, Paris.
Sketchbook 1099. Jacqueline Roque Picasso Collection. Dation
1990.

OPP.22:029; MPP:1990.101.54r; PP.22:292; BL.96:25.54r;
GR.90*:98

Guitare et compotier sur une table.
Paris. 1922~1923. Watercolor & pencil on
paper. 21 x 14 cm. Musée Picasso, Paris.
Sketchbook 1099. Jacqueline Roque
Picasso Collection. Dation 1990.

OPP.22:031; MPP:1990.101.59r;
BL.96:25.59r





Tête d'homme: étude pour la flûte de Pan. Paris. 1922~1923. Black ink & brown ink wash on paper. 21 x 14 cm. Musée Picasso, Paris. Sketchbook 1099. Jacqueline Roque Picasso Collection. Dation 1990.

OPP.22:235; MPP:1990.101.53r; PP.22:293; BL.96:25.53r

Carnet classique: Pulcinella. Paris. 1922~1923. India ink, ink & gouache on paper. 14 x 22 cm. Musée Picasso, Paris. Sketchbook 1099. Jacqueline Roque Picasso Collection. Dation 1990.

OPP.22:247; MPP:1990.101.29r; PP.22:291; BL.96:25.29r; GR.90*:98; JC.98*:144



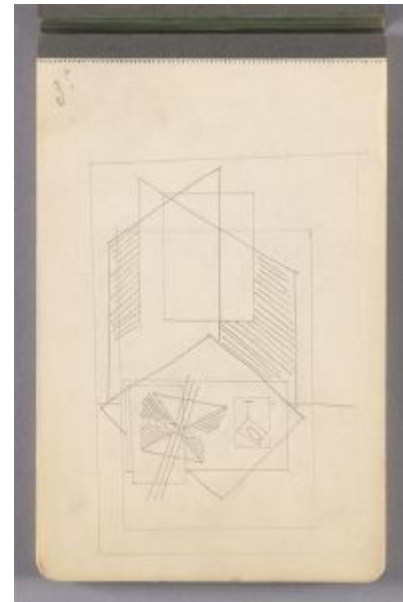


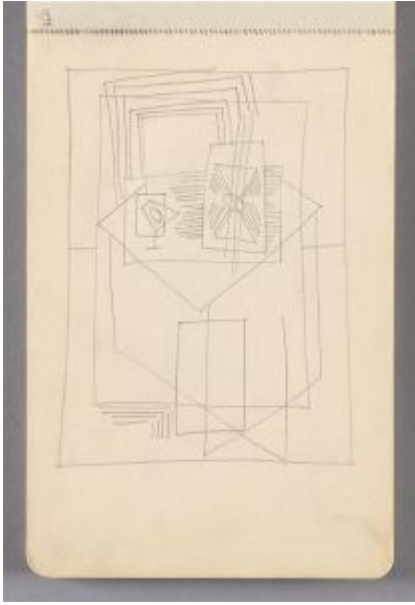
Étude pour Nature morte au guéridon et à la guitare. Paris. 1922~1923. Graphite pencil & pastel on paper. 21 x 14 cm. Musée Picasso, Paris. Sketchbook 1099. Jacqueline Roque Picasso Collection. Dation 1990.

OPP.22:264; MPP:1990.101.20r; BL.96:25.20r

Guitare et verre sur une table (à l'envers). Paris. 1922~1923. Graphite on beige paper. 20,6 x 13,9 cm. Musée Picasso, Paris. Jacqueline Roque Picasso Collection, Dation 1990.

OPP.22:409; MPP:1990.101.01r; BL.96:25.1r





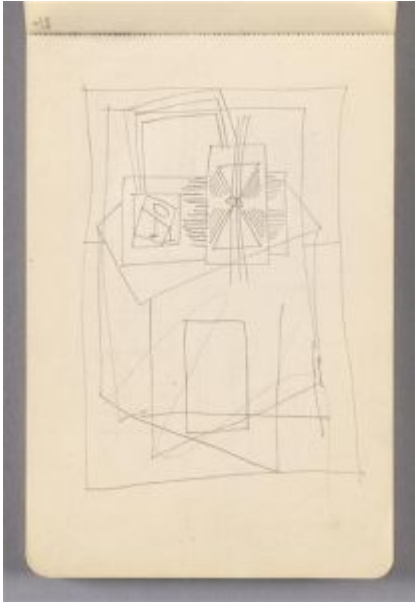
Guitare et verre sur une table. Paris. 1922~1923. Graphite on beige paper. 20,6 x 13,9 cm. Musée Picasso, Paris. Jacqueline Roque Picasso Collection, Dation 1990.

OPP.22:410; MPP:1990.101.02r; BL.96:25.2r

études de natures mortes: verre et journal Le Sémaphore; guitares. PARIS. 1922~1923. Graphite on beige paper. 20,6 x 13,9 cm. Musée Picasso, Paris. Jacqueline Roque Picasso Collection, Dation 1990.

OPP.22:411; MPP:1990.101.03r; BL.96:25.3r



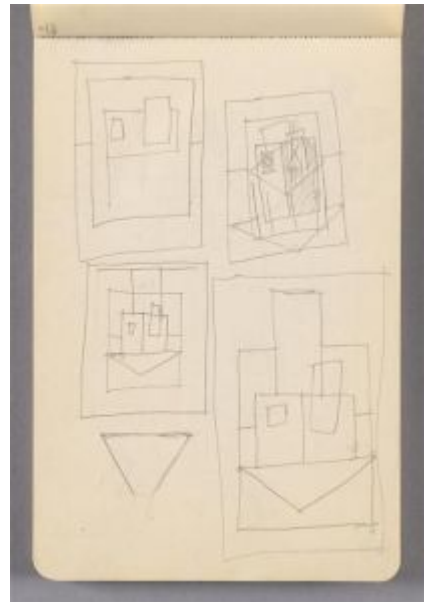


Guitare et verre sur une table. Paris. 1922~1923. Graphite on beige paper. 20,6 x 13,9 cm. Musée Picasso, Paris. Jacqueline Roque Picasso Collection, Dation 1990.

OPP.22:412; MPP:1990.101.04r; BL.96:25.4r

Cinq études de natures mortes, guitare et verre sur une table. Paris. 1922~1923. Graphite on beige paper. 20,6 x 13,9 cm. Musée Picasso, Paris. Jacqueline Roque Picasso Collection, Dation 1990.

OPP.22:413; MPP:1990.101.05r; BL.96:25.5r





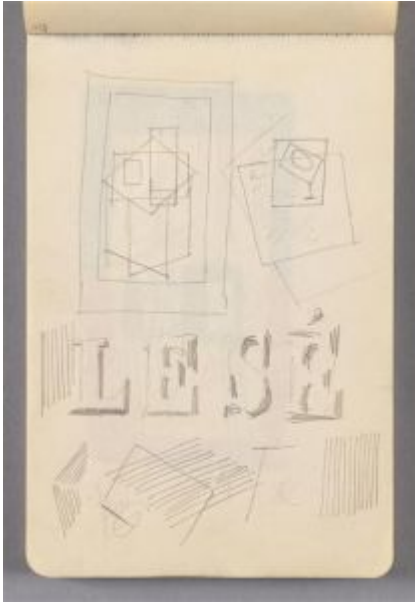
Étude d'ensemble et de détails de natures mortes: verre, poissons, table et guitares. Paris. 1922~1923. Graphite on beige paper. 20,6 x 13,9 cm. Musée Picasso, Paris. Jacqueline Roque Picasso Collection, Dation 1990.

OPP.22:414; MPP:1990.101.06r; BL.96:25.6r

Cinq études de table pour une nature morte. Paris. 1922~1923. Graphite on beige paper. 20,6 x 13,9 cm. Musée Picasso, Paris. Jacqueline Roque Picasso Collection, Dation 1990.

OPP.22:415; MPP:1990.101.07r; BL.96:25.7r





Études d'ensemble et de détails pour une nature morte: table, verre, guitares, titre de journal Le Sémaphore. Paris. 1922~1923. Graphite on beige paper. 20,6 x 13,9 cm. Musée Picasso, Paris. Jacqueline Roque Picasso Collection, Dation 1990.

OPP.22:416; MPP:1990.101.08r; BL.96:25.8R

Guitare et verre sur une table (à l'envers). Paris. 1922~1923. Pastel on beige paper. 20,6 x 13,9 cm. Musée Picasso, Paris. Jacqueline Roque Picasso Collection, Dation 1990.

OPP.22:417; MPP:1990.101.09r; BL.96:25.9r



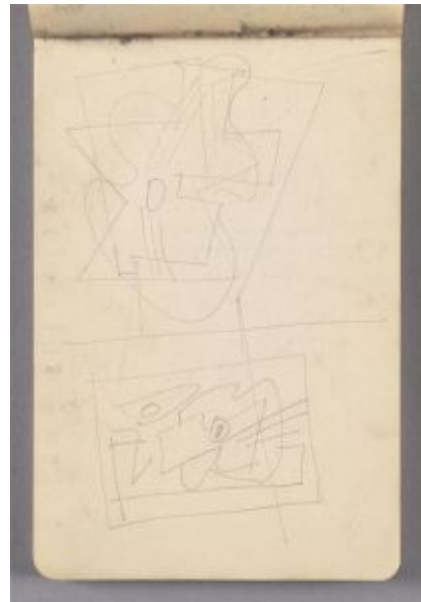


Esquisse de nature morte: guitare et verre sur une table. Paris. 1922~1923. Pastel on beige paper. 20,6 x 13,9 cm. Musée Picasso, Paris. Jacqueline Roque Picasso Collection, Dation 1990.

OPP.22:418; MPP:1990.101.09v; BL.96:25.9v

Deux études de nature morte avec guitare et compotier. Paris. 1922~1923. Graphite on beige paper. 20,6 x 13,9 cm. Musée Picasso, Paris. Jacqueline Roque Picasso Collection, Dation 1990.

OPP.22:419; MPP:1990.101.10r; BL.96:25.10r





Deux études de nature morte avec guitare et compotier.

Paris. 1922~1923. Graphite on beige paper. 20,6 x 13,9 cm. Musée Picasso, Paris. Jacqueline Roque Picasso Collection, Dation 1990.

OPP.22:420; MPP:1990.101.11r; BL.96:25.11r

Guitare et compotier sur une table. Paris. 1922~1923.
Graphite on beige paper. 20,6 x 13,9 cm. Musée Picasso,
Paris. Jacqueline Roque Picasso Collection, Dation 1990.

OPP.22:421; MPP:1990.101.12r; BL.96:25.12r



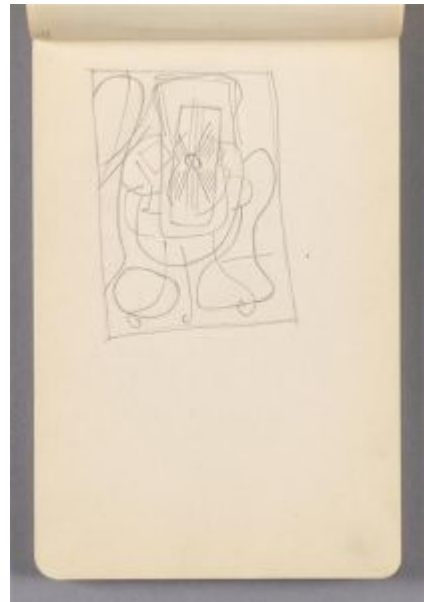


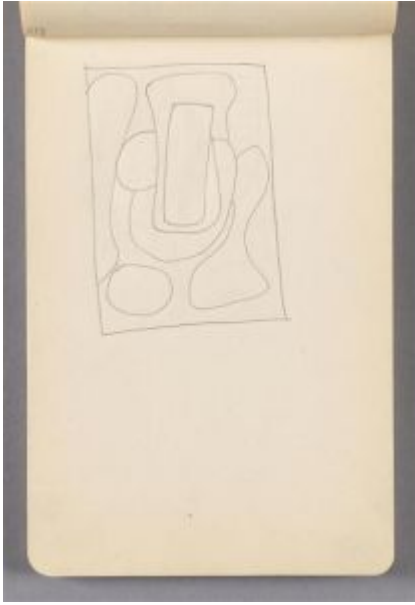
Guitare et compotier sur une table. Paris. 1922~1923. Graphite & color pencils on beige paper. 20,6 x 13,9 cm. Musée Picasso, Paris. Jacqueline Roque Picasso Collection, Dation 1990.

OPP.22:422; MPP:1990.101.13r; BL.96:25.13r

Étude pour Nature morte au guéridon et à la guitare.
Paris. 1922~1923. Graphite on beige paper. 20,6 x 13,9 cm.
Musée Picasso, Paris. Jacqueline Roque Picasso Collection,
Dation 1990.

OPP.22:423; MPP:1990.101.14r; BL.96:25.14r





Esquisse d'ensemble de Nature morte au guéridon et à la guitare. Paris. 1922~1923. Graphite on beige paper. 20,6 x 13,9 cm. Musée Picasso, Paris. Jacqueline Roque Picasso Collection, Dation 1990.

OPP.22:424; MPP:1990.101.15r; BL.96:25.15r

Étude pour Nature morte au guéridon et à la guitare; esquisse d'une chaise à porteurs. Paris. 1922~1923. Graphite on beige paper. 20,6 x 13,9 cm. Musée Picasso, Paris. Jacqueline Roque Picasso Collection, Dation 1990.

OPP.22:426; MPP:1990.101.17r; BL.96:25.17r





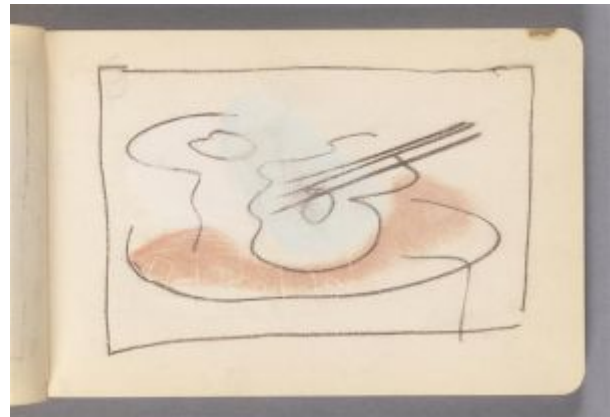
Étude pour Nature morte au guéridon et à la guitare. Paris. 1922~1923. Graphite on beige paper. 20,6 x 13,9 cm. Musée Picasso, Paris. Jacqueline Roque Picasso Collection, Dation 1990.

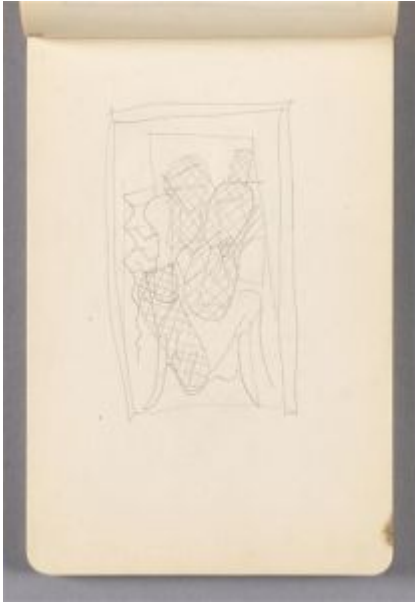
OPP.22:427; MPP:1990.101.18r; BL.96:25.18r

Guitare et compotier sur une table.

Paris. 1922~1923. Pastel on beige paper. 20,6 x 13,9 cm. Musée Picasso, Paris. Jacqueline Roque Picasso Collection, Dation 1990.

OPP.22:429; MPP:1990.101.22r; BL.96:25.22r





Guitare et compotier sur une table. Paris. 1922~1923. Graphite on beige paper. 20,6 x 13,9 cm. Musée Picasso, Paris. Jacqueline Roque Picasso Collection, Dation 1990.

OPP.22:430; MPP:1990.101.23r; BL.96:25.23r

Guitare et compotier sur un guéridon. Paris. 1922~1923. Graphite on beige paper. 20,6 x 13,9 cm. Musée Picasso, Paris. Jacqueline Roque Picasso Collection, Dation 1990.

OPP.22:431; MPP:1990.101.24r; BL.96:25.24r





Guitare et compotier sur un guéridon. Paris. 1922~1923.
Graphite on beige paper. 20,6 x 13,9 cm. Musée Picasso, Paris.
Jacqueline Roque Picasso Collection, Dation 1990.

OPP.22:432; MPP:1990.101.25r; BL.96:25.25r

Guitare et compotier sur un guéridon. Paris.
1922~1923. Graphite on beige paper. 20,6 x 13,9 cm.
Musée Picasso, Paris. Jacqueline Roque Picasso Collection,
Dation 1990.

OPP.22:433; MPP:1990.101.26r; BL.96:25.26r





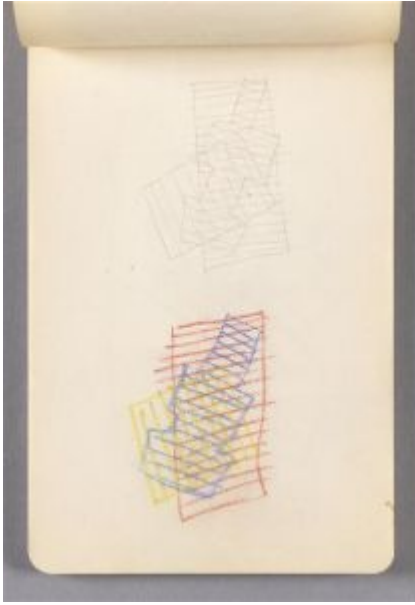
Guitare et compotier sur un guéridon. Paris. 1922~1923.
Graphite on beige paper. 20,6 x 13,9 cm. Musée Picasso, Paris.
Jacqueline Roque Picasso Collection, Dation 1990.

OPP.22:434; MPP:1990.101.27r; BL.96:25.27r

Guitare et compotier sur un guéridon. Paris.
1922~1923. Graphite on beige paper. 20,6 x 13,9 cm.
Musée Picasso, Paris. Jacqueline Roque Picasso Collection,
Dation 1990.

OPP.22:435; MPP:1990.101.28r; BL.96:25.28r



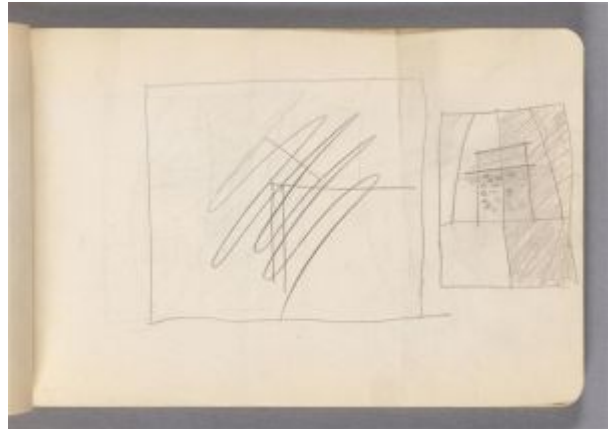


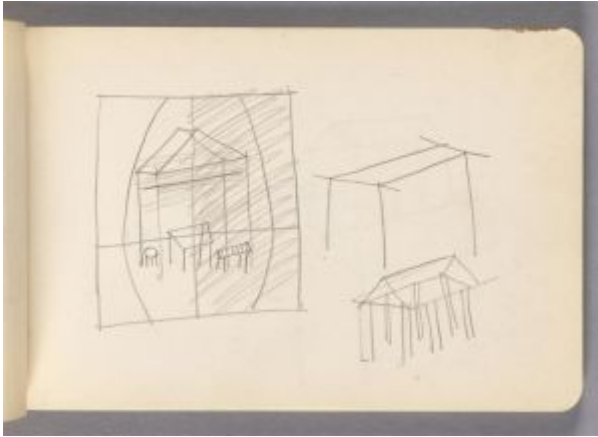
Deux études de guitare. Paris. 1922~1923. Graphite & pastel on beige paper. 20,6 x 13,9 cm. Musée Picasso, Paris. Jacqueline Roque Picasso Collection, Dation 1990.

OPP.22:436; MPP:1990.101.31r; BL.96:25.31r

Deux études de décors, dont une raturée, pour Antigone. Paris. 1922~1923. Graphite on beige paper. 20,6 x 13,9 cm. Musée Picasso, Paris. Jacqueline Roque Picasso Collection, Dation 1990.

OPP.22:437; MPP:1990.101.32r; BL.96:25.32r





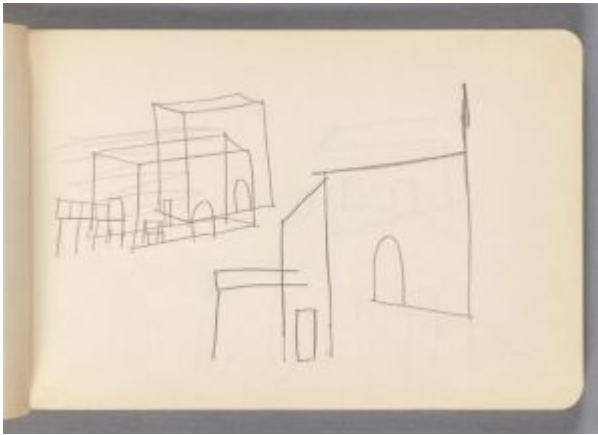
Projets de décors pour Antigone. Paris. 1922~1923. Graphite on beige paper. 20,6 x 13,9 cm. Musée Picasso, Paris. Jacqueline Roque Picasso Collection, Dation 1990.

OPP.22:438; MPP:1990.101.33r; BL.96:25.33r

Projets de décors pour Antigone. Paris. 1922~1923. Graphite on beige paper. 20,6 x 13,9 cm. Musée Picasso, Paris. Jacqueline Roque Picasso Collection, Dation 1990.

OPP.22:439; MPP:1990.101.34r; BL.96:25.34r



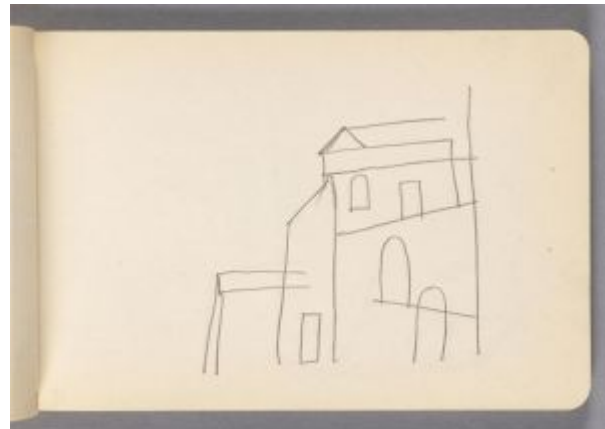


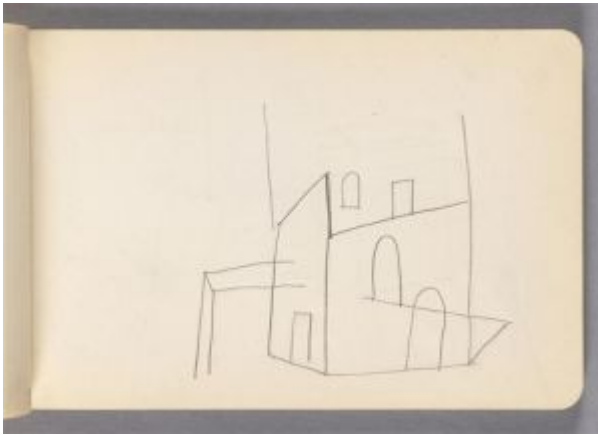
Projets de décors pour Antigone. Paris.
1922~1923. Graphite on beige paper. 20,6 x 13,9
cm. Musée Picasso, Paris. Jacqueline Roque
Picasso Collection, Dation 1990.

OPP.22:440; MPP:1990.101.35r; BL.96:25.35r

Projet de décor pour Antigone. Paris.
1922~1923. Graphite on Ingres paper.
20,6 x 13,9 cm. Musée Picasso, Paris.
Jacqueline Roque Picasso Collection, Dation
1990.

OPP.22:441; MPP:1990.101.36r;
BL.96:25.36r



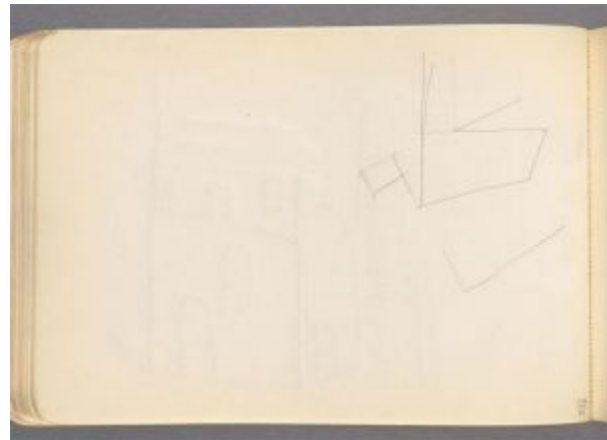


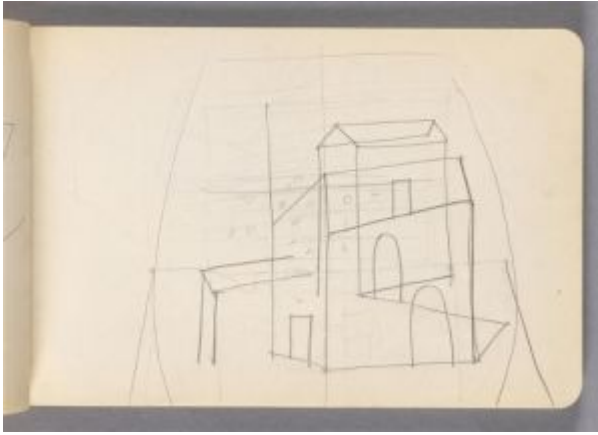
Projet de décor pour Antigone. Paris.
1922~1923. Graphite on beige paper. 20,6 x 13,9
cm. Musée Picasso, Paris. Jacqueline Roque
Picasso Collection, Dation 1990.

OPP.22:442; MPP:1990.101.37r; BL.96:25.37r

Esquisse de décor pour Antigone. Paris.
1922~1923. Graphite on beige paper. 20,6
x 13,9 cm. Musée Picasso, Paris. Jacqueline
Roque Picasso Collection, Dation 1990.

OPP.22:443; MPP:1990.101.37v;
BL.96:25.37v



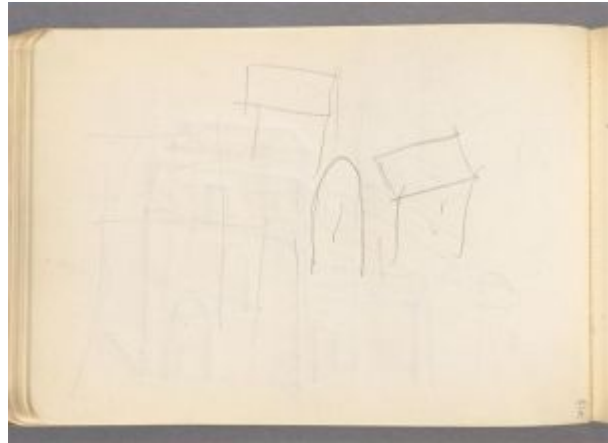


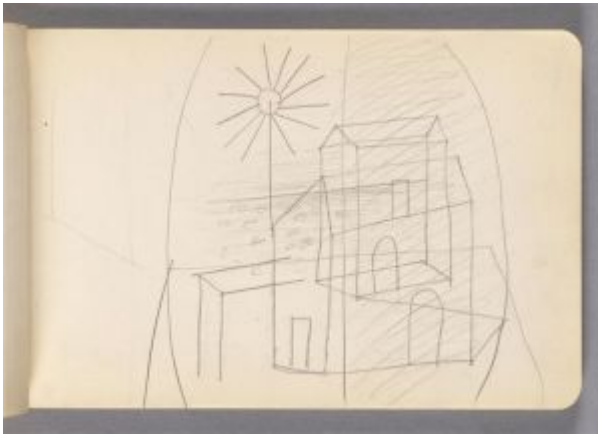
Projet de décor pour Antigone. Paris.
1922~1923. Graphite on beige paper. 20,6 x 13,9
cm. Musée Picasso, Paris. Jacqueline Roque
Picasso Collection, Dation 1990.

OPP.22:444; MPP:1990.101.38r; BL.96:25.38r

Esquisse de décor pour Antigone. Paris.
1922~1923. Graphite on beige paper. 20,6
x 13,9 cm. Musée Picasso, Paris. Jacqueline
Roque Picasso Collection, Dation 1990.

OPP.22:445; MPP:1990.101.38v;
BL.96:25.38v





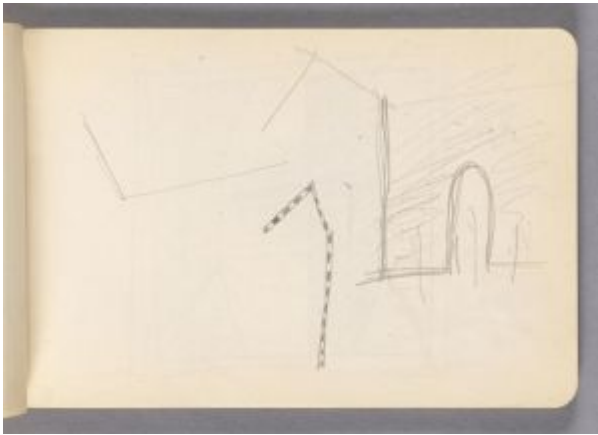
Projet de décor pour Antigone. Paris.
1922~1923. Graphite on beige paper. 20,6 x 13,9
cm. Musée Picasso, Paris. Jacqueline Roque
Picasso Collection, Dation 1990.

OPP.22:446; MPP:1990.101.39r; BL.96:25.39r

Projet de décor pour Antigone. Paris.
1922~1923. Graphite on beige paper. 20,6
x 13,9 cm. Musée Picasso, Paris. Jacqueline
Roque Picasso Collection, Dation 1990.

OPP.22:447; MPP:1990.101.40r;
BL.96:25.40r



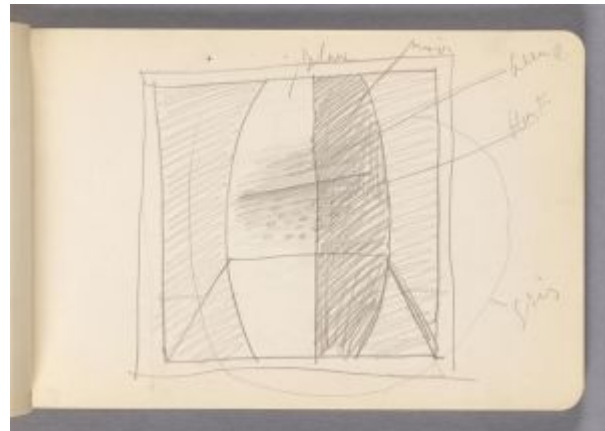


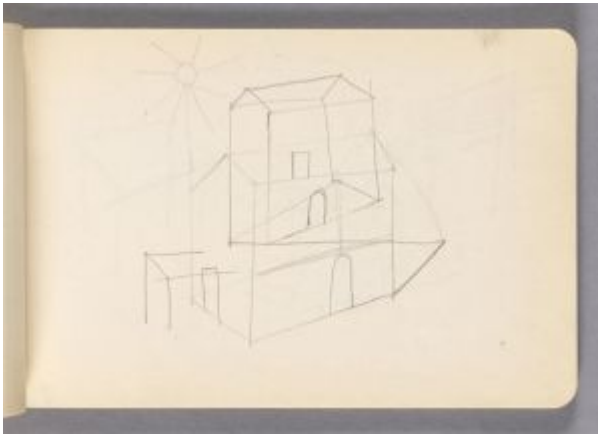
Projets de décors pour Antigone. Paris.
1922~1923. Graphite on beige paper. 20,6 x 13,9
cm. Musée Picasso, Paris. Jacqueline Roque
Picasso Collection, Dation 1990.

OPP.22:448; MPP:1990.101.41r; BL.96:25.41r

**Projet de décor pour Antigone avec
indications de couleurs: Blanc / noir /
bleu c. / bleu F. / gris.** Paris.
1922~1923. Graphite on beige paper. 20,6
x 13,9 cm. Musée Picasso, Paris. Jacqueline
Roque Picasso Collection, Dation 1990.

OPP.22:449; MPP:1990.101.42r;
BL.96:25.42r





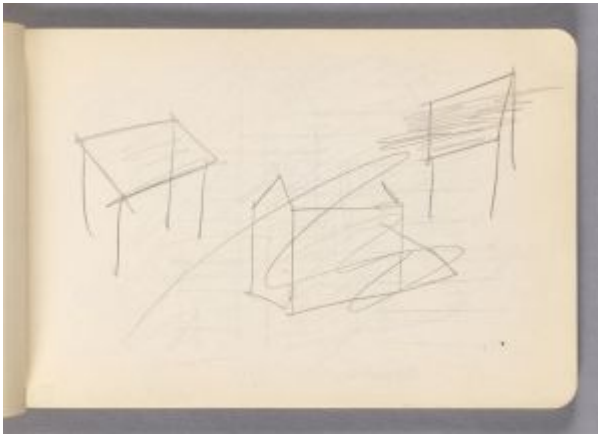
Projet de décor pour Antigone. Paris.
1922~1923. Graphite on beige paper. 20,6 x 13,9
cm. Musée Picasso, Paris. Jacqueline Roque
Picasso Collection, Dation 1990.

OPP.22:450; MPP:1990.101.43r; BL.96:25.43r

Esquisse raturée. Paris. 1922~1923.
Graphite on beige paper. 20,6 x 13,9 cm.
Musée Picasso, Paris. Jacqueline Roque
Picasso Collection, Dation 1990.

OPP.22:451; MPP:1990.101.43v;
BL.96:25.43v





Esquisses de décors raturées pour Antigone.

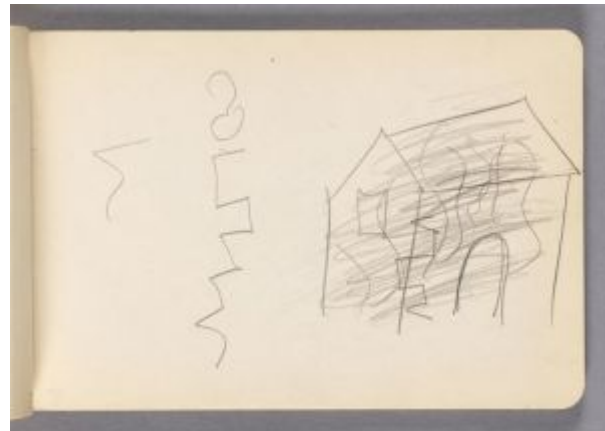
Paris. 1922~1923. Graphite on beige paper. 20,6 x 13,9 cm. Musée Picasso, Paris. Jacqueline Roque Picasso Collection, Dation 1990.

OPP.22:452; MPP:1990.101.44r; BL.96:25.44r

Esquisse de décors pour Antigone.

Paris. 1922~1923. Graphite on beige paper. 20,6 x 13,9 cm. Musée Picasso, Paris. Jacqueline Roque Picasso Collection, Dation 1990.

OPP.22:454; MPP:1990.101.46r; BL.96:25.46r





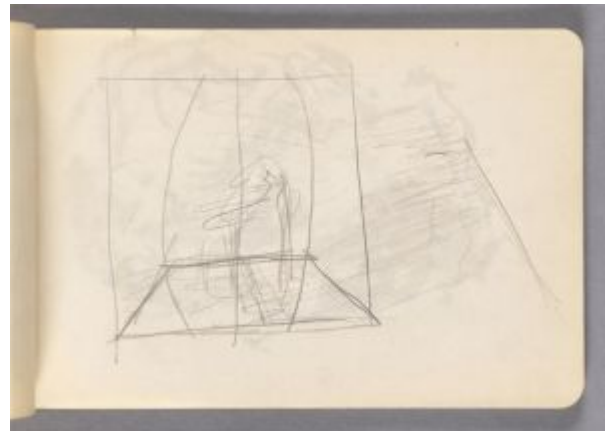
Esquisse de décors raturée pour Antigone.

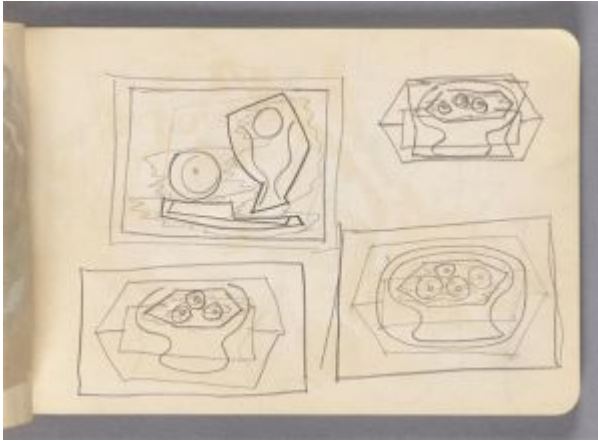
Paris. 1922~1923. Graphite on beige paper. 20,6 x 13,9 cm. Musée Picasso, Paris. Jacqueline Roque Picasso Collection, Dation 1990.

OPP.22:455; MPP:1990.101.47r; BL.96:25.47r

Projet de décor pour Antigone. Paris. 1922~1923. Graphite on beige paper. 20,6 x 13,9 cm. Musée Picasso, Paris. Jacqueline Roque Picasso Collection, Dation 1990.

OPP.22:456; MPP:1990.101.48r; BL.96:25.48r





Quatre études de nature morte: verre et pomme; compotiers de fruits. Paris.

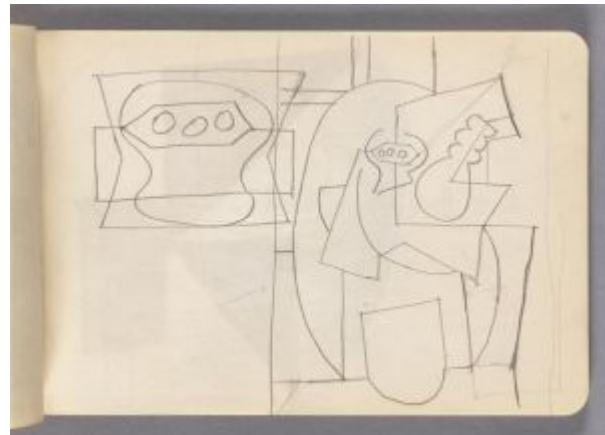
1922~1923. Graphite on beige paper. 20,6 x 13,9 cm. Musée Picasso, Paris. Jacqueline Roque Picasso Collection, Dation 1990.

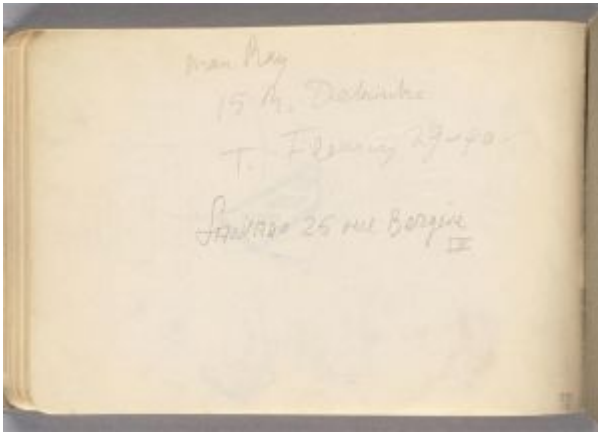
OPP.22:457; MPP:1990.101.55r; BL.96:25.55r

Étude d'ensemble et de détails pour une nature morte: guitare et compotier sur une table. Paris. 1922~1923.

Graphite on beige paper. 20,6 x 13,9 cm. Musée Picasso, Paris. Jacqueline Roque Picasso Collection, Dation 1990.

OPP.22:458; MPP:1990.101.56r; BL.96:25.56r



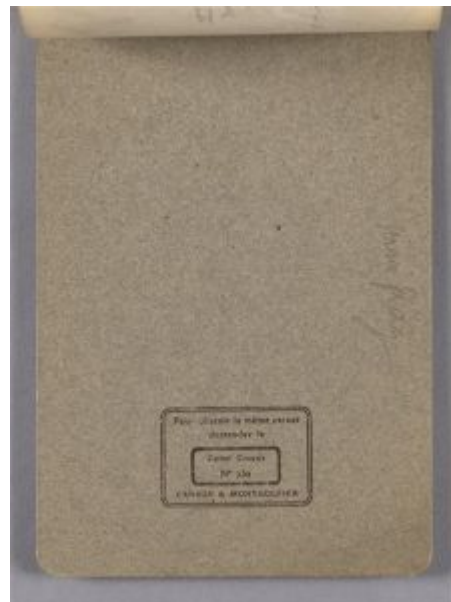


Inscription. Paris. 1922~1923. Graphite on beige paper. 20,6 x 13,9 cm. Musée Picasso, Paris. Jacqueline Roque Picasso Collection, Dation 1990.

OPP.22:465; MPP:1990.101.65v; BL.96:25.65v

3ème de couverture. Paris. 1922~1923. Mixed media. 21,8 x 13,9 cm. Musée Picasso, Paris. Jacqueline Roque Picasso Collection, Dation 1990.

OPP.22:467; MPP:1990.101.c3; BL.96:25.c3





4ème de couverture. Paris. 1922~1923. Mixed media. 21,8 x 13,9 cm. Musée Picasso, Paris. Jacqueline Roque Picasso Collection, Dation 1990.

OPP.22:468; MPP:1990.101.c4; BL.96:25.c4